

GLOBAL MINING



MARKET

www.global-miningmarket.com

April - June 2026 Issue



HITACHI

Reliable Solutions

LANDCROS

LANDCROS BRAND SITE



GRX
26

Global
Resources
Innovation
Expo

In partnership



Experience GRX26

Where the mining and METS sectors unite
to drive the industry forward

5 - 7 May 2026
Perth, Australia



The Spark
opening night



Vibrant,
hi-tech
exhibition

Global
Open Innovation
Colab Challenge



Dedicated
Innovation
Zone

Interactive
conference
program

Join forward-thinking companies, innovators, executives and investors to experience this unique industry-led, innovation focussed conference and exhibition.

For program and registration, visit grx.au

MINING EXCELLENCE

Precision. Innovation. Sustainability.

With decades of expertise in large-scale mining, we deliver tailored blasting solutions that maximize productivity. Combining technical mastery with a safety-first approach, we act as true collaborators in customer success. Our precision, innovation, and commitment to environmental stewardship set us apart.



AUSTIN POWDER

austinpowder.com
info@austinpowder.com

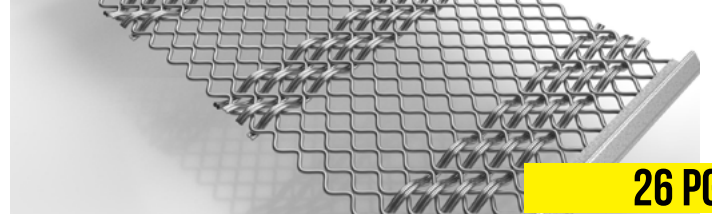
**INNOVATION
THAT MATTERS**

CONTENTS



06 PG

Haver & Boecker Presents Cutting-Edge Packing Technology at interpack 2026



26 PG

MAJOR Announces OPTIMUMWIRE® Thermo Screen at CONEXPO/CON-AGG 2026



11 PG

From Tires to Conveyors: TECH Europe Delivers End-to-End Mining Solutions



29 PG

Cat's Artificial Intelligent Assistant



14 PG

Comacchio S.p.A. Launches "Comacchio X" – Dedicated Mining Exploration Division at PDAC in Toronto



40 PG

Hitachi Construction Machinery to Rebrand as "Landcros" From 2027



20 PG

South Africa Strengthens Workforce Readiness Ahead of Critical Minerals Boom



46 PG

Western Australia Extends Griffin Coal Lifeline Through 2031



ON THE COVER

Driving the Future with LANDCROS

Hitachi Construction Machinery enters a new era with **LANDCROS**—a bold identity focused on innovation, reliability, and smart solutions for construction and mining. Built on a legacy of excellence, LANDCROS represents a commitment to sustainable progress, advanced technology, and customer-driven performance.

Trusted legacy. Smarter future.



EDITOR'S NOTE

EDITORIAL LEAD

Wayne Melrose
editor@global-miningmarket.com

CONTENT STRATEGY LEAD

Derrick Driscoll
derrick@global-miningmarket.com

CONTENT EDITOR

Clotilda Maponda
tilda@global-miningmarket.com

EDITORIAL COORDINATOR

Brenna Shumba
editor@global-miningmarket.com

HEAD OF COMMERCIAL OPERATIONS

Leeroy Ville
leeroy@global-miningmarket.com

COMMERCIAL PARTNERSHIPS EXECUTIVE

Tony Raines
tony@global-miningmarket.com

CREATIVE OPERATIONS LEAD

Charles Frey
charles@global-miningmarket.com

OPERATIONS & ADMIN SUPPORT LEAD

Maclyn Hide
admin@btc-media.co.za

ONLINE PLATFORM MANAGER

Dean Kruger
dean@global-miningmarket.com

DIGITAL MEDIA COORDINATOR

Charmaine Miller
charmaine@global-miningmarket.com

VIRTUAL EVENTS SPECIALIST

Juliet Neil
juliet@global-miningmarket.com

LIVE EVENTS PROJECT LEAD

Caroline Neil
caroline@global-miningmarket.com

Design

cre8base@gmail.com

United Kingdom Office - Head Office

Address: 6 Albert Murray Close,
Gravesend, DA12 1LT, UK
Email: info@global-miningmarket.com
Tel: +44 78 888 00474

South Africa Office - Finance & Administration

Address: Fancourt Office Park, Cnr Northumberland & Felstead Rd, Northriding, Johannesburg, 2188
Email: admin@global-miningmarket.com
Tel: +27 11 568 0710

EDITOR'S NOTE

GLOBAL MINING MARKET MAGAZINE | SOUTHERN AFRICA INNOVATION & TECH EVOLUTION EDITION

Dear Readers,

As we step into the second quarter of 2026, the global mining industry finds itself at a defining crossroads, shaped by both opportunity and uncertainty. The sector continues to demonstrate resilience, yet it is increasingly influenced by geopolitical tensions, shifting energy demands, and the accelerating push toward sustainable resource extraction.

One of the most significant influences on the mining landscape in recent months has been the ongoing instability in parts of the Middle East. While traditionally associated with oil and gas, the region's conflicts have had far-reaching consequences that extend deeply into the mining value chain. Disruptions in key shipping routes, particularly around strategic maritime corridors, have led to increased freight costs and delays in the transportation of critical minerals. This has placed additional pressure on supply chains that were only beginning to stabilize after years of pandemic-related disruptions.

Moreover, the volatility in energy markets triggered by these conflicts has had a direct impact on mining operations worldwide. Energy remains one of the largest input costs in mining, and fluctuations in fuel prices have forced companies to reassess operational budgets, production timelines, and long-term investment strategies. For many producers, especially in emerging markets, this has meant tightening margins and a renewed focus on efficiency and cost optimization.

At the same time, the global demand for minerals essential to the energy transition—such as lithium, copper, cobalt, and rare earth elements—continues to surge. Governments and industries alike are intensifying efforts to secure stable supplies of these critical resources, recognizing their central role in renewable energy systems, electric vehicles, and advanced technologies. This has sparked a wave of exploration activities across Africa, Latin America, and parts of Asia, positioning these regions as key players in the future of mining.

However, with opportunity comes responsibility. Environmental, social, and governance (ESG) considerations are no longer optional—they are central to the way mining companies operate and are evaluated. Investors are increasingly prioritizing projects that demonstrate strong sustainability credentials, ethical sourcing practices, and meaningful community engagement. The industry is being called upon not only to extract value from the earth, but to do so in a way that preserves it for future generations.

In this edition, we explore these dynamics in depth. From insights into emerging mining hubs and technological innovations to expert analysis on market trends and investment flows, our goal is to provide a comprehensive view of the forces shaping the global mining market today. We also highlight the strategic importance of Africa and the Middle East as both resource-rich regions and critical connectors in global trade.

Despite the challenges posed by geopolitical tensions and economic uncertainty, the mining industry continues to evolve, adapt, and lead. It remains a cornerstone of global development, powering industries, enabling infrastructure, and driving the transition toward a more sustainable future.

As always, we thank our partners, contributors, and readers for being part of this journey.

Brenna Melrose

Editor

Global Mining Market Magazine

HAYER & BOECKER PRESENTS CUTTING-EDGE PACKING TECHNOLOGY AT INTERPACK 2026



OELDE, Germany – HAYER & BOECKER OHG will exhibit its latest packaging and filling solutions as well as pioneering advancements in AI-based processes and performance optimization under the theme AIR (Artificial Intelligence & Robotics) at interpack 2026 in Düsseldorf. At Booth A27 in Hall 12, the HAYER & BOECKER Machinery Division and its technology brands, BEHN + BATES, Feige FILLING, NEWTEC Bag, AVENTUS and QUAT2RO® will present how their solutions make bagging, filling and palletizing more efficient, precise and safe while unlocking new potential with digital tools.

The booth will feature live demonstrations of revolutionary empty bag logistics, modern robotics applications and intelligent camera recognition. A special focus will lie on the AI-powered analysis tool QUAT2RO® Connect. For further process optimization, it now offers a cloud-based dashboard showing machine performance, downtime and bottlenecks. In addition to in-booth consultations, visitors will have the opportunity to discuss retrofit concepts, new line designs and service tools with brand specialists across all showcased technologies.

HAYER & BOECKER Machinery Division

The HAYER & BOECKER Machinery Division provides manufacturers with future-oriented packing and logistics solutions for bulk materials with a comprehensive service portfolio driving sustainability and efficiency. At interpack 2026, visitors will be able to examine the latest innovations in AI-optimized processes, creating safer, resource-efficient and more reliable packing lines.

A central highlight will be a ROTO-PACKER® combined with a RADIMAT-PATHFINDER®, a revolutionary system which enables manufacturers to fully automate their empty bag logistics. The PATHFINDER transports empty bags through the plant on a flexible route to cover larger distances despite space constraints. For complete automation of the bag logistics, the AMICUS® DEPAL robot depalletizes empty bags and feeds them to the RADIMAT bag applicator.

Another highlight will be the prototype of the AMICUS® SEAL robot, which can easily be integrated at the conveyor belt of an existing packing line to ensure a safe, fast and reliable sealing process using AI technology. HAYER & BOECKER experts will be available for consultations on BESPOKE – a service for finding the suitable

bag type and material that meets individual material and customer requirements.

QUAT2RO®

At the Mission Control booth, visitors will discover powerful AI-based performance tools from HAYER & BOECKER's QUAT2RO® product suite. HAYER & BOECKER will present its new AIR (Artificial Intelligence and Robotics) developments that enable manufacturers to ensure continuous process and performance optimization thanks to real-time monitoring and machine learning.

The AI-powered BAGcheck, for instance, automatically detects whether the correct bag type is being used for the material. VALVEcheck monitors the correct opening of the valve bag and its attachment to the filling nozzle while MATEXcheck detects unwanted material leakage during the filling process in real time. The SEALcheck system automatically detects incorrectly sealed bags and ejects them before palletizing. For manufacturers, this means continuous, AI-supported quality control along the entire bagging line for greater process reliability, less product loss and consistently high packaging quality.

BEHN + BATES

BEHN + BATES, HAYER & BOECKER's food industry brand, will showcase its newest INTEGRA® IVx packing machine, which combines energy efficiency with a high level of cleanliness, even offering options for AI tools. The ADAMS® CARE-LINE edition will be of particular interest to the sensitive food sector, as it works with airtight PE bags and combines tried-and-tested components in a new system that aligns with the highest standards of sensitive food production supporting stable processes and confident quality in daily operation.

Feige FILLING

Feige FILLING, a leader in efficient and safe filling equipment, will showcase its new semiautomatic ELEMENTRA® 26, a flexible pallet filling machine designed for the precise filling of highly viscous products. Visitors can also experience the mobile version of the ELEMENTRA® 26, featuring with-surface filling mode. The highly effective design works without the use of costly compressed air and ensures safe

filling without air pockets. For easy control and maintenance, all Feige ELEMENTRA® and INTEGRA® machines are now equipped with a new HMI that enables features such as electric and pneumatic circuit diagrams and extensive recipe management. The web-based interface is designed for intuitive operation with modern multi-touch functionality, supporting faster orientation for operators.

AVENTUS

For filling granulates from the chemical, agriculture and animal food industries into FFS bags, AVENTUS will present the TOPAS M machine equipped with the live analysis and maintenance tool QUAT2RO® Connect. The AVENTUS team will demonstrate remote-control options with real-time machine status, production data and error messages. Visitors can learn more about QUAT2RO® Connect at the QUAT2RO® Mission Control section. In addition, AVENTUS experts will be available throughout the show to discuss the full TOPAS machine family including TOPAS XL (2,600 b/h), TOPAS L (2,200 b/h) and TOPAS M (2,000 b/h) and how each configuration can be tailored to different products, bag types and performance targets.

NEWTEC Bag

Packing specialist NEWTEC Bag will demonstrate its high-capacity palletizing machine AURUM for granules and flake products packed in different bag types and sizes. The palletizer runs on a new motor that enables intelligent energy recovery and thus decreases operational costs. Visitors will also be able to experience the user-friendly touchscreen interface, which enables easy bag positioning control and maintenance. AURUM is designed for bags from 5 to 50 kg and supports common bag types including FFS, open-mouth and valve bags. The line is available in three capacities: AURUM Blu (1,900 bags/hour), AURUM Bianco (2,300 bags/hour) and AURUM Rosso (up to 2,800 bags/hour) and is built for easy maintenance access and

enhanced safety features such as presence detection during service work.

About HAVER & BOECKER

HAVER & BOECKER are pioneers in holistic bulk and liquid management and innovative industrial fabric solutions.

As a powerful family of technology brands and experts, they have been developing, producing and distributing high-tech fabric products, machine and plant technologies, as well as services and digital solutions for customers across all industries that aspire to technological market leadership since 1887.

In this way, HAVER & BOECKER enables producers to develop highly efficient, high-performance, safe, profitable, and sustainable products, optimize processes, and bring a unique fascination to collaborative engineering.

The designation Ö indicates a registered trademark of HAVER & BOECKER oHG in Germany. Several indicated designations are protected trademarks also in other countries worldwide.

LinkedIn Handle: @HAVER&BOECKERMachineryDivision

Facebook Handle: @HAVER&BOECKER

YouTube Handle: @haverboecker

Instagram Handle: @haverboecker

HEAVY EQUIPMENT & RENTALS METAL

Helping you **MOVE** the Earth




✓ **HEAVY EQUIPMENT RENTALS** 

✓ **HEAVY EQUIPMENT SALES** 

✓ **HEAVY EQUIPMENT SERVICES** 

"Why buy when you can rent smarter? Heavy Metal Equipment & Rentals – safe, reliable, and cost-effective equipment when you need it most."

HEAVYMETALEQUIPMENT.CA 

DELIVERING INNOVATIVE SOLUTIONS FOR PROVEN SITE MANAGEMENT



Vital Chemical leads the way in researching, developing, manufacturing and supplying science-based chemical solutions that restore, protect and enhance the environment while supporting efficient and cost-effective mining operations worldwide.

Partnering for Local Impact



OFFICIALLY
PARTNERED
WITH



Vital Chemical's partnership with Saudi Arabia-based application partner, Gulf Elite, reflects a shared commitment to delivering environmentally sound solutions that support site operations.

Gulf Elite sets new benchmarks in sustainability and waste management, providing innovative, comprehensive solutions tailored to the needs of industrial and governmental sectors across Saudi Arabia.

Through this partnership, clients across the Middle East gain access to Vital Chemical's proven, non-toxic erosion and sediment control solutions, combined with Gulf Elite's local knowledge and application expertise.

Together, Vital Chemical and Gulf Elite demonstrate a deep commitment to sustainable development, societal well-being, and the delivery of tailored solutions specifically formulated to solve a diverse range of site challenges.



Proven Site Stabilisation Solutions

Vital's site stabilisation products are engineered to the highest environmental standards, ensuring compliance, reliable performance and long-term stability. Their renowned polymer technology provides instant, environmentally sound surface stabilisation, with solutions suitable for short, medium and long-term applications. These products have demonstrated reliable performance in highly varied climatic conditions, including delivering effective stabilisation for 12 months across a 240-hectare tailings dam, protecting both the local community and the surrounding environment from dust erosion.



Delivering Operational and Cost Efficiencies

Effective site stabilisation is more than an environmental obligation. It directly supports safety, productivity and operational efficiency. Uncontrolled dust and unstable surfaces can damage equipment, reduce visibility and affect the health of workers, local communities and surrounding habitats, leading to costly downtime.

By implementing Vital's tailored site stabilisation programs, mining operators achieve reliable site stability while reducing maintenance and improving operational efficiency. The solutions are also designed to minimise reliance on water-intensive methods, delivering operational efficiencies in arid regions where water is a critical resource.



Independently Verified and Trusted Expertise

Every formulation is analytically tested, field trialled and independently assessed prior to market entry, with validation carried out by accredited testing authorities, leading universities and independent consultants. This rigorous process ensures clients receive reliable, best value solutions.



Integrated Environmental Solutions

Effective sediment management is one component of a broader environmental responsibility. Vital Chemical integrates its solutions with land rehabilitation and revegetation programs, enabling companies to manage immediate operational challenges while supporting long-term environmental outcomes and a positive legacy. The application of a Vital site stabilisation program delivered immediate stabilisation across 300 hectares of open sands, providing long-term protection to nearby waterways.



A Sustainable Partnership for the Future

Vital Chemical, in partnership with Gulf Elite, is committed to helping site operations achieve long-term environmental outcomes efficiently and responsibly. By combining science-based innovation, local expertise, global best practice and measurable results, the companies deliver erosion and sediment stabilisation solutions that support the future of responsible site operations in arid and challenging environments.

Vital's Ready to Use Range



**NO MIXING
JUST SPRAY**

Vital's Ready to Use range has been specially formulated to ensure a simple, efficient and highly effective product application for your next project.



No stand pipes, no mixing



Reduced fuel consumption from travel time to water source



Instant C factor .1 equivalent to 80% grass cover



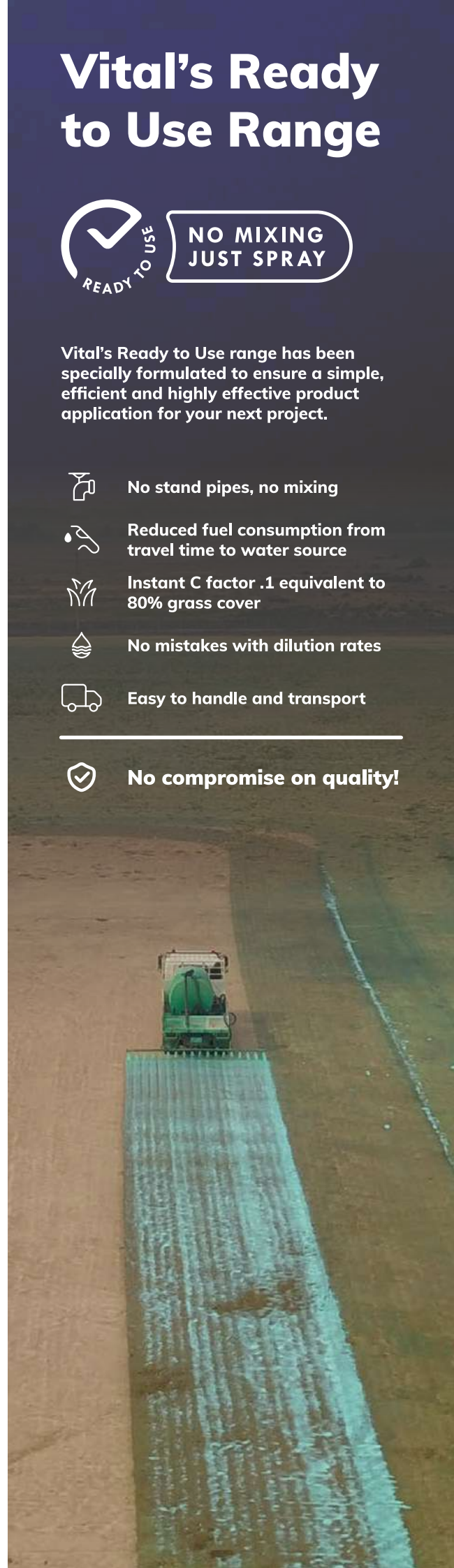
No mistakes with dilution rates



Easy to handle and transport



No compromise on quality!





GLOBAL LEADING MAGNETIC SEPARATORS SUPPLIER

SINCE 1993

30+ YEARS

EXPERIENCE IN MINERAL PROCESSING INDUSTRY



Vertical Ring High Gradient Magnetic Separator (WHIMS), providing the best physical separation and most environmental solution for concentrating minerals.

ROY HILL

HEMATITE TAILINGS RECOVERY

Fully Manufactured under the Australia standard

WHMS power consumption < 1.5 kWh/t

40 Units of Low Intensity MS (LIMS) & High Intensity MS (WHIMS)

Huate Magnet Group: Empowering the Roy Hill Iron Ore Project, Building a Global Mining Benchmark with Chinese Intelligent Manufacturing

Driven by Huate Magnet Group customized magnetic separation solutions, the Roy Hill Iron Ore Project has achieved remarkable separation performance, delivering outstanding economic and operational benefits.



HUATE MAGNET GROUP CO.,LTD.

Headquarter Add: 6999 Huate Rd, Weifang, Shandong, China.

Email: marketing@chinahuate.com Website: www.huatemagnets.com

Tel: 0086 19862618888

KONECRANES LIFT TRUCKS FOR MODERN MINING OPERATIONS

Mining puts heavy demands on every piece of equipment. Conditions change quickly, surfaces can be uneven, and machines run long shifts with little room for downtime. That's why we design our lift trucks with safety, durability and everyday practicality in mind. Our approach is straightforward: build machines that perform reliably in tough environments and make handling tasks easier for people working on site. We build lift trucks for your world.

Rather than adapting standard models, we base our lift trucks on strong frames, stable hydraulics and cabins that give operators good visibility even in dusty or low-light areas. This helps the truck stay steady on rough ground and gives operators the control they need when working with heavy or awkward loads. It's a combination that supports smooth handling both in open-pit areas and underground tunnels where space is limited.

Flexibility is also important in mining, where handling requirements vary and machines are typically configured for dedicated tasks. Across our forklift and reach stacker range, we support a wide variety of attachments – including tire handlers, spreaders with folding legs, coil rams, hooks, magnets – to handle containers, service parts, flat racks and large haul-truck tires. By equipping machines for specific tasks, sites can support different workflows efficiently while maintaining safe and stable operations.

We also focus on keeping the equipment running as consistently as possible. Maintenance access is straightforward and built-in monitoring and diagnostics and remote diagnostics help identify issues early. For mines located far from service hubs, the telematic solutions we offer help teams to keep the truck in good working conditions, by troubleshooting quicker, reducing equipment downtime and managing resources much more efficiently. Combined with the global support of genuine and official parts via an extensive

distributor network, we keep machine productive during their entire lifecycle.

Safety is another area we treat as standard, not optional. The OPTIMA cabin, protective grids and corrosion-resistant coatings help the truck cope with harsh environments. For mining, we offer an additional safety kit that includes reflective markings, emergency stop buttons, a fire extinguisher, a tire wedge and a red flag—simple but important tools when working in areas where ground conditions, lighting or visibility may be challenging.

Whether it's a forklift working underground or a reach stacker handling heavy cargo on the surface, the goal is the same: provide equipment that is strong, stable and practical for real mining conditions. As mines continue to move deeper and handle heavier components, lift trucks need to support safe and efficient operations. With adaptable configurations, solid engineering and long-term service support, we aim to give mining teams equipment they can trust without adding unnecessary complexity or noise.

Discover our models for mining operations here:

Forklifts - www.kclifttrucks.com/equipment/forklifts

Reach stackers - www.kclifttrucks.com/equipment/reach-stackers/container-handling-reach-stackers

KONECRANES

BUILT FOR YOUR WORLD

Built for safety and stability, Konecranes lift trucks are particularly suited for materials handling in the extreme conditions of both surface and underground mines. Our forklifts and reach stackers can carry tires, heavy machinery, and general-purpose cargo – anything required for mining operations.

Visit <https://www.kclifttrucks.com/industries/mining> for more information. Page also available through following QR-code.



TAKRAF Overland Conveyor

Driving Efficiency and Reliability.

TAKRAF Group designs overland conveyor systems for high availability, energy efficiency and reliable operation in demanding environments.

Using advanced dynamic analysis, optimized structures and gearless drive technology, our conveyors ensure continuous and sustainable transport across long distances and challenging terrain.



TAKRAF Gearless Overland Conveyor, 5.3 km, 11,000 tph, Chile



www.takraf.com
info@takraf.com



TAKRAF
For Mining with Meaning.

MIDDLE EAST OIL PRICES SURGE TO RECORD \$153 PER BARREL



The global petroleum market operates through a complex network of supply routes, pricing systems and risk frameworks built on predictable flows through key chokepoints, with around 20% of global oil passing through critical maritime corridors. When these routes are disrupted, pricing structures quickly shift from traditional cost-based models to availability-driven premiums, significantly increasing volatility and impacting Middle East crude benchmarks.

These disruptions trigger widespread ripple effects across global supply chains. Energy-intensive industries such as steel, chemicals, cement and manufacturing face rising input costs, while transportation, petrochemical feedstocks and trade balances are also affected. As a result, inflationary pressures increase and central banks are forced to factor energy volatility into policy decisions, particularly when price shocks are supply-driven rather than demand-led.

Benchmark pricing mechanisms also come under strain during supply constraints. Reduced availability of crude grades and lower trading volumes can distort price discovery, with premiums expanding sharply and no longer reflecting underlying fundamentals. In some cases, concentrated buying activity further amplifies volatility, weakening the

reliability of traditional benchmarks.

Refineries, particularly in Asia where a large share of Middle Eastern crude is processed, must respond quickly by adjusting operations. Many reduce utilisation rates to avoid losses or turn to alternative supply sources, which often come at significantly higher premiums. This shift highlights the growing value of supply security during periods of disruption.

At the same time, current market conditions are accelerating investment in infrastructure and strategic reserves. Governments and industry players are prioritising diversification through new pipeline routes, expanded storage capacity and alternative export channels to reduce dependence on vulnerable chokepoints such as the Strait of Hormuz.

Compared to past crises, today's supply-driven disruptions are triggering faster and more concentrated price movements, reflecting improved market responsiveness but also increased fragility. Overall, the situation underscores the need for greater resilience, diversified supply networks and stronger coordination to stabilise global energy markets in the face of ongoing uncertainty.

HOEFLON®

The most precise crane. Suitable for any job.

Hoeflon minicranes deliver powerful performance with a compact design and impressive lifting capacity. Ideal for mining, construction and industrial projects.

For sales and service in South Africa, please contact our authorized dealer Fastlift Cranes (Pty) Ltd.

Fastlift Cranes (Pty) Ltd
+ 27 21 140 1514 (CPT)
+ 27 11 141 0237 (JHB)
bradley@fastliftcranes.co.za



COMACCHIO S.P.A. LAUNCHES “COMACCHIO X” — DEDICATED MINING EXPLORATION DIVISION AT PDAC IN TORONTO



Comacchio S.p.A. has announced the official launch of Comacchio X, its new Mining Exploration Division, at PDAC taking place in early March. The creation of this dedicated division marks a strategic milestone in the company's continued evolution and reinforces its long-term commitment to the mineral exploration sector.

With more than 20 years of experience in exploration drilling and over 500 rigs sold across more than 40 countries worldwide, Comacchio has built internationally recognized expertise in the sector. The establishment of Comacchio X reflects both the company's growth and the increasing specialization required by the mining exploration market.

A Dedicated Structure for a Specialized Industry

The mineral exploration sector is characterized by demanding operational environments, strict safety standards, and a constant need for high-performance equipment. Comacchio X has been created to respond to these challenges with a focused organizational structure and highly specialized expertise.

“Throughout this journey, the importance of supporting customers with dedicated, highly specialized expertise in response to the distinctive technical, operational and safety-driven demands of the exploration drilling market has made it clear that a focused organizational structure is essential,” said Emanuele Comacchio, Technical & Sales Manager of the Division.

“Comacchio X brings together dedicated commercial and technical specialists focused exclusively on the mineral exploration sector, including engineers, geologists, and experienced industry consultants.”

This structure enables customers to receive comprehensive consultancy at every stage – from machine selection and configuration to on-site commissioning and after-sales support. Dedicated assistance is also provided in selecting the most suitable drilling equipment based on specific geological and operational conditions, ensuring operational continuity and minimizing downtime.

The New Identity: Engineering Continuity, Vision for the Future

The name “Comacchio X” reflects both continuity and ambition.

“The direct reference to Comacchio reaffirms continuity with the same high engineering standards and manufacturing quality that have always defined its identity,” explained Andrea Maida, Division Manager. “The ‘X’ symbolizes our determination to go beyond known boundaries, explore new technological frontiers, and develop innovative solutions to address future industry challenges.”

The division also adopts a distinct visual identity characterized by orange – a colour closely associated with mining environments and mineral oxidation processes – further strengthening its sector-specific positioning.

The CX Line: Versatility and Performance

At the core of the new division is the CX line of mineral exploration drill rigs, developed to provide maximum versatility and adaptability.

The range covers pullback capacities from 10 to 50 tons and is available in both truck-mounted and crawler-mounted configurations, allowing flexibility across diverse site conditions and logistical requirements. The rigs are engineered to support a wide range of drilling applications, including diamond core drilling, reverse circulation (RC), and grade control operations. They can also be configured as multipurpose machines capable of integrating multiple drilling technologies within a single unit.

“Thanks to constant dialogue with our customers and careful attention to their needs, we are able to develop tailor-made machines and guarantee ‘mining-ready’ solutions complete with the documentation required by the mine, ensuring rapid and efficient commissioning immediately after delivery,” added Emanuele Comacchio.

Safety First: Innovation Driven by Responsibility

Safety is the guiding principle behind Comacchio X's engineering philosophy.

“For us at Comacchio X, innovation stems first and foremost from the responsibility to protect those who work on our machines every day,” emphasized Andrea Maida.

Every drill rig is engineered to meet – and in some cases exceed – the highest international safety standards. Advanced technologies are integrated to protect operators at every stage of operation. These include automated rod handling systems that virtually eliminate manual intervention, reinforced protective structures, certified work platforms, and remote-control capabilities.

Complemented by advanced dust suppression systems and protected operator cabins, Comacchio X's approach ensures a safer working environment for both personnel and the surrounding ecosystem. A flagship example is the new CX 20A, a fully automated rig equipped with a certified operator cabin designed to maximize protection and operator comfort.

Future Outlook: Digitalization and Interconnectivity

Looking ahead, Comacchio X is investing in advanced digital solutions to enhance operational efficiency and service continuity.

“Innovation for us also means ensuring service continuity and operational efficiency through digital interconnectivity,” concluded Andrea Maida.

Starting next year, rigs will be equipped with next-generation connectivity systems capable of operating via SIM cards, satellite communication, and local Wi-Fi networks. This will enable remote monitoring and improved operational control.

These capabilities will be integrated into the new COMMAC portal – a digital platform that allows customers to monitor fleet performance in real time, access centralized dashboards, share data via customizable APIs, and enable proactive service interventions.



ANTOFAGASTA
INDUSTRIAL
ASSOCIATION

JUNE 8 -11
ANTOFAGASTA



GUEST COUNTRY
CANADA

EXPONOR CHILE 2026

JOIN THE
STRATEGIC HUB OF
INVESTMENT,
INNOVATION,
TECHNOLOGY, AND
SUSTAINABILITY

1300
EXHIBITORS

30
COUNTRIES

www.exponor.cl

SPONSORS:



65 años
Nuestra historia nos une,
el futuro nos mueve



GLENCORE

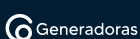
PAMPA NORTE | BHP



Teck

35 años
ESCONDIDA | BHP

SUPPORTED BY:



OFFICIAL MEDIA:



SKF TKBT 10 BELT TENSION METER DELIVERS PRECISION, DRIVES PEAK MACHINERY PERFORMANCE AND LONGEVITY



Belts are the heartbeat of a vast array of machinery, from compressors and conveyor systems to pumps and harvesters, providing the essential link that transfers power and drives motion, ensuring smooth operation and sustained productivity.

“In a nutshell, when belts perform at their best, machinery runs seamlessly, production stays on track and reliability becomes the standard,” says Eddie Martens, Product Manager – MaPro at SKF South Africa. “Belts play a critical role, with accurate alignment and proper tensioning essential to achieving peak performance and efficiency, long-term reliability and extended system longevity.”

This is where SKF’s TKBT 10 Belt Tension Meter steps in as a game-changer. Engineered to transform belt tensioning into a process defined by accuracy, reliability and ease, this portable, user-friendly tool turns a critical requirement into a confident routine. Equipped with a flexible neck sensor and an optional long cable for challenging hard-to-reach or hazardous environments, the instrument’s robust design makes belt maintenance easier, safer, more precise and also remarkably simple.

The TKBT 10 determines a belt’s natural frequency (Hz) and calculates tension force in Newtons (N) or pound-force (lbf). Results are displayed clearly on a bright LCD screen, ensuring measurements are easy to read even in poorly lit areas. With a multilingual interface offering six language options and internal

memory with a storage capacity of up to 750 readings, the tool is built for versatility. Martens also highlights that zero-point calibration allows users to perform calibration independently, adding convenience to precision.

The TKBT 10 Belt Tension Meter is ideal for a wide spectrum of belt-driven machinery, from HVAC systems, centrifugal fans and blowers to crushers, vibrating screens, combine units, irrigation pumps and mobile equipment. “In fact, this instrument ensures precision in pumps, fans, mixers, machine tools, mobile equipment and countless other belt-driven applications on vehicle and machinery applications,” notes Martens. The versatility of the TBKT 10 makes it a trusted solution across industries including manufacturing, material handling, packaging, mining, mineral processing and cement, agriculture and food & beverage, where reliable performance and efficiency are non-negotiable.

With precise pulley alignment and accurate tensioning as non-negotiable foundations for long belt life and continuous production, the innovative SKF TKBT 10 delivers the critical data needed – quickly, safely and with absolute confidence. By protecting against wear, securing reliability, maximising uptime and powering productivity, the tool amplifies efficient, sustainable operations – setting a new benchmark in belt maintenance.



SMARTER SIZING. SMARTER SORTING.

Integrated Sizer® and sorting solutions for efficient, modern mining.

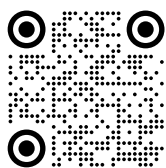


In today's mining environment, efficiency begins at the front end of the process. MMD Group has built its reputation on delivering robust Sizer® systems and proven scalable bulk ore sorting solutions that enhance recovery while lowering operating costs.

By producing consistently sized material, our Sizers create the optimal feed for bulk ore sorting, enabling more accurate separation, reducing waste, and improving downstream efficiency. The combination of precise sizing and selective sorting ensures mines get the most value from every tonne processed.

Operating across diverse commodities and challenging environments, we combine engineering expertise with practical site experience to help mines achieve smarter, more sustainable processing.

+ Discover our
SOLUTIONS



WWW.MMDSIZERS.COM

Green Mining Solutions
Sizers | Feeders | IPSC

AFRICAN LNG COULD BE EUROPE'S LIFELINE AS MIDDLE EAST, RUSSIA CRISES ESCALATE

Global energy markets are undergoing their biggest shift since the 1970s oil crisis, as supply disruptions and geopolitical instability force Europe to rethink its energy strategy. In this transition, Africa is emerging as a key natural gas supplier, offering both vast reserves and a strategic geographic advantage that positions it as a long-term partner in Europe's energy security.

Africa holds around 620 trillion cubic feet of proven gas reserves, with favourable characteristics such as low sulphur content and long reserve lifespans, providing reliable, cost-efficient supply over decades. Its proximity to Europe is a major advantage, reducing shipping times to just 8-12 days compared to much longer routes from other regions, lowering costs and improving supply flexibility.

Countries like Nigeria, Senegal, Mauritania and Mozambique are central to this shift. Nigeria remains Africa's most established LNG exporter, with expansion projects set to significantly increase capacity, while newer developments in West and East Africa are rapidly bringing additional supply online. European nations are already increasing imports from these sources, attracted by competitive pricing and improved reliability.

At the same time, floating LNG technology is accelerating project

development across the continent, offering lower costs, faster timelines and reduced environmental impact compared to traditional onshore facilities. This is helping unlock previously inaccessible offshore gas reserves and scale up production more efficiently.

Significant investment is flowing into African gas infrastructure, including pipelines, LNG plants and export facilities, alongside expanded European regasification capacity to accommodate increased imports. However, compliance with stricter environmental regulations, particularly around methane emissions, remains a key challenge that producers are actively addressing.

This evolving partnership is also reshaping pricing dynamics, with African suppliers moving toward more flexible and market-driven contracts rather than traditional long-term, oil-linked agreements. For Europe, this provides greater supply diversity and resilience, while for Africa it opens up long-term economic and industrial development opportunities.

Overall, Africa's growing role as a gas supplier marks a fundamental shift in global energy trade, strengthening Europe's energy security while positioning African producers as critical players in the transition toward a more diversified and resilient energy system.

PROVIDING SAFETY UNDERGROUND



ROCK & GROUND SUPPORT INJECTION SOLUTIONS

Enhance underground safety and productivity with Normet's fast-acting, high-performance resins engineered for stabilising fractured ground, filling voids, and securing rock bolts.



TamPur 116

Rapid ground consolidation for lasting stability



TamPur 117

Efficient void filling that keeps operations moving



TamPur RBG

Bolt resin for early strength and safety



Scan to learn more

Normet delivers complete injection solutions, from materials to expertise, keeping your underground operations safer, faster, and more efficient.

WIRELESS LEVEL TRANSMITTER



Emerson launched the Rosemount 3408 Wireless Level Transmitter for automated measurement applications. Described as “non-contacting radar,” it cuts installation time and costs compared to cabled predecessor models. It also “eliminates measurement blind spots and the need for manual readings,” the supplier said.

Using 80 gigahertz frequency modulated continuous wave technology, the solution can measure the level of liquids and solids. Data is transmitted via the WirelessHART communication protocol. “The 3408 can also be easily integrated into any host monitoring and control system compliant with the HART protocol and the Field Device Integration standard,” Emerson said. “This makes it easy for operations and maintenance teams to obtain clear visibility of data that may previously have been siloed, resulting in improved operational performance and inventory management.”

The 3408 features a modular electronics cassette that can be quickly replaced. “The availability of different seals and antenna types increases the range of applications for which the transmitter is suitable,” Emerson said. “With two power modules, organizations can adjust the update rate to suit their needs and obtain extended battery life with a slower update rate.”

HAVER & BOECKER



NIAGARA

FINDING THE SWEET SPOT

Changing screen media too frequently?

A blend of different screen media is the answer to optimizing your process.

Our PROcheck process analyzes each phase of screening to achieve the optimal combination of open area and wear life.

In other words, **finding the sweet spot!**



See how **PROcheck** can maximize your operation.

haverniagara.com/procheck



Schedule today!

1-800-325-5993

procheck@haverniagara.ca

SOUTH AFRICA STRENGTHENS WORKFORCE READINESS AHEAD OF CRITICAL MINERALS BOOM



African Mining Week 2026, scheduled for October 14–16 in Cape Town, will highlight initiatives by South Africa and other African mining markets to equip their workforce for the anticipated surge in the global critical minerals sector

As South Africa accelerates the expansion of its critical minerals sector – including plans to unlock an estimated R40 trillion in iron reserves – skills development has become a cornerstone of its long-term growth strategy. By targeting R2 trillion in investment over the next five years, the country recognizes that a well-trained workforce not only drives operational efficiency but also strengthens investor confidence, positioning South Africa as a globally competitive hub for critical mineral investment.

Skills Development and National Critical Minerals Strategy

Enhancing skills development supports South Africa's broader agenda of increasing employment opportunities and strengthening economic resilience, while channeling mineral wealth into local industrialization. The country aims to tackle youth unemployment by creating opportunities for 1.8 million young people by 2030. As one of South Africa's largest employers, supporting nearly 900,000 jobs, the mining sector plays a critical role in achieving this goal.

In his February 2026 State of the Nation Address, South African President Cyril Ramaphosa emphasized the expansion of public employment programs, including the Community Work Program and Presidential Employment Stimulus, to provide skills development and employment for youth and women. “For too many people, life remains hard. Jobs are scarce and opportunity is out of reach,” stated Ramaphosa.

The expansion of these initiatives and the country's 2030 youth employment target align closely with South Africa's critical minerals strategy, which prioritizes human capital development as a key enabler of industrial growth and energy transition objectives.

International Research Collaboration Strengthens Long-Term Skills Ecosystem

A major boost to workforce development in critical minerals was announced in mid-February through a partnership between the European Union (EU) and South Africa's Energy and Water Sector

Education and Training Authority and the Council for Scientific and Industrial Research. The initiative includes €2 million in funding from the EU to establish a dedicated platform to strengthen skills development and research and workforce readiness across the critical minerals and battery value chain.

Part of the EU's broader Clean Trade and Investment Partnership, under which €15.5 billion has been committed to strengthening South Africa's critical minerals sector, the skills initiative aims to:

- Expand Technical and Vocational Education and Training institutional capacity
- Provide specialized training aligned with battery minerals, refining and recycling
- Facilitate internships and Work-Integrated Learning placements with industry partners
- Create employment pathways for graduates entering critical mineral industries

Complementing government and multilateral initiatives, private sector players are also investing in workforce development. In mid-February, mining major Anglo American announced plans to establish a Global Institute of Critical Minerals Research, bringing together universities and research institutions from South Africa, the UK and other global mining hubs.

“We want to contribute to South Africa's agenda of empowering the next generation of miners while unlocking the country's full mining potential,” stated Anglo American CEO Duncan Wanblad

With South Africa leading in terms of global production of platinum group metals, manganese and chrome – and now seeking to unlock its untapped iron ore potential – strategic skills development initiatives will strengthen the country's position in the evolving critical minerals space.

African Mining Week 2026: Driving Collaboration and Investment

Against this backdrop, the upcoming African Mining Week conference, scheduled for October 14–16 in Cape Town, is set to play a key role in advancing dialogue on workforce readiness, investment and strategic partnerships. The event will convene policymakers, mining companies, academic institutions and global investors to assess Africa's preparedness to meet rapidly growing global demand for critical minerals, which is projected to quadruple by 2040.

BOBCAT BRINGS AUTOSHIFT AND COMFORT UPGRADES TO B730 M-SERIES BACKHOE LOADER

Bobcat has announced the introduction of the AutoShift transmission in the B730 M-Series backhoe loader, alongside a number of other updates to this model aimed at markets in the Middle East and Africa and the Commonwealth of Independent States (CIS).

The B730 M-Series machine with AutoShift transmission comes as a separate model. The functionality of the AutoShift transmission is identical to that in Bobcat's B730 R-Series model. It is designed to optimise gear shifting during travel operations on the backhoe loader. The system automatically adjusts the transmission gearing based on vehicle speed, load and terrain conditions, improving fuel efficiency, reducing operator fatigue and enhancing overall machine performance.

The key benefits of the AutoShift transmission include ease of use, operator comfort, and higher efficiency. By eliminating manual gear shifting, the system significantly reduces operator fatigue and allows the operator to concentrate on driving and loader functions. It also ensures that the operator remains fully focused on loading, pushing, and other tasks without the distraction of gear selection. In addition, AutoShift guarantees that the machine is always in the optimal gear, resulting in faster cycle times and consistent performance regardless of the operator's experience.

As part of Bobcat's ongoing product development – and based on extensive feedback from dealers, customers, and operators – the company has introduced several updates to enhance operator comfort on the B730 M-Series backhoe loader. These improvements include tinted windows, available from March

2026, which provide better thermal comfort and reduce sunlight entering the cab, as well as enhanced fit and finish throughout the operator environment. The door opening angle has been increased to create a larger entry space for easier access and improved overall comfort. Additionally, a unified Bobcat common key system becomes now standard to follow other Bobcat equipment, adding greater convenience and fleet compatibility.

About Bobcat

Since 1958, Bobcat has been empowering people to accomplish more. As a leading global manufacturer of compact equipment, Bobcat has built a proud legacy of innovation and a reputation for delivering smart solutions to customers' toughest challenges.

Bobcat now offers extensive line ups of compact machinery (including loaders, excavators, telehandlers, portable power, compact tractors and mowers) and material handling equipment (including forklifts and warehouse solutions), plus a broad range of attachments, parts and services. All of these products are backed by the support of a worldwide network of independent dealers and distributors. The Bobcat brand is owned by Doosan Bobcat.

About Doosan Bobcat

Doosan Bobcat is a company within the Doosan Group. Doosan Group is a top-tier global enterprise that has proudly served customers and communities for more than a century. Doosan Bobcat is based in Bundang, South Korea.

To learn more about Bobcat's products, attachments and services, visit www.bobcat.com.



BULK BAGGING

Our robust range of bulk bagging equipment is designed to fill bulk and jumbo bags for a variety of products, including aggregates, coal, salt, animal feeds, compost, soils, bark and pellets.



MANUAL & SEMI AUTO BAGGING SYSTEMS

We also have a huge portfolio of market leading solutions for manual and semi automated bagging, using pre-made plastic or paper bags.

We supply complete systems, from bulk hoppers, infeed conveyors, weighing systems, through to bag handling, closing and bag preparation machinery.

MOBILE BAGGING SYSTEMS

Pack your product at source with no fixed building costs using our mobile bagging solutions. Mobile bagging machinery can be delivered globally, in fixed trailer chassis form, or in ISO shipping container options, with manual, semi auto, and fully automated options. All with the latest innovative technology with full compliance to international health and safety standards.



ORDER ON YOUR TIME:

Three ways interstate-mcbee's ecommerce site supports global mining operations

In the fast-paced mining industry, uptime is everything. But with teams operating across time zones, especially in sub-Saharan Africa, getting the right part at the right time can be a challenge.

Since 1947, Interstate-McBee has been reaching customers around the globe with aftermarket diesel engine parts, fuel injectors/components, and gaskets for the heavy-duty diesel and natural gas industries.

Launched in 2025, Interstate-McBee's eCommerce platform is designed to bridge that gap. Whether you are at a mine site at sunrise or in an office after-hours, our website gives you full control to browse, quote, and order from our extensive parts catalog anytime.

Here are three key features of the Interstate-McBee eCommerce site that help global customers keep equipment running without delay:

1. Quotes On-Demand: Generate & Accept Without Picking Up the Phone

Not sure which part fits your engine? Or looking for volume pricing on a bulk order? Our Quote tool is built to support you.

Just fill out a simple form with your engine details, including Engine Serial Number (ESN), model, and any known part needs. Our expert team will take it from there. We will match your request with the correct components and provide pricing based on your specific requirements.

Once your quote is ready, it is saved to your dashboard for review and easy checkout. No back-and-forth phone calls, no guesswork, just accurate parts, delivered on your time.

2. Flexible Ordering Options: Designed for the Way You Work

Whether you prefer to search by product number or browse by category, our site offers multiple ways to find and order parts. You can:

- Browse by application or component group
- Search directly by part number
- Use the Quick Order pad for rapid entry
- Upload an Excel sheet of part numbers to build a cart in seconds

Each method connects you to the same accurate inventory, pricing, and part details, making large or repeated orders fast and efficient.

Plus, you can save custom shopping lists for common builds or restock orders. No need to start from scratch each time.

3. All the Details You Need, In One Place

Every product page is loaded with helpful information:

- Technical details and dimensions
- Product photos
- Availability by branch
- Related products
- References like engine-specific catalogs, product flyers, line cards, and more
- Pricing, including your discount clearly noted

This level of transparency allows you to make informed purchasing decisions without needing to call for clarification. It is the power of a knowledgeable sales team, built right into the product page.

Supporting Global Teams 24/7

Whether you are looking to streamline repeat orders, check inventory before a breakdown, or simply avoid the delay of international calls, our eCommerce platform makes it easier for distributors to do business with Interstate-McBee on your time.

With over 20,000+ aftermarket diesel engine parts and growing, we are here to support heavy-duty diesel and natural gas operations around the globe. Visit interstate-mcbee.com today and start exploring all the ways our online tools keep your team moving forward.

Order On Your Time, Not Ours

Easy Online-ordering Available Now to Existing Distributors

What Are You Looking For?

- Prices (with YOUR discount shown)
- Weights and dimensions
- Details
- Photos
- Inventory

Available for 20,000+ parts

Flexible Ordering Options

- Order anytime
- Save custom lists for quick ordering
- Review orders for accuracy

Quoting Made Easy

- Built-in quote tool for efficiency
- Quote forms have been simplified
- Review and approve quotes from an intuitive user-dashboard



Current Customers Order at
orders.interstate-mcbee.com



IRAN AMPLIFIES LNG SHORTAGE BY BLOCKING PASSAGES THROUGH HORMUZ



Iran has yet to allow a single carrier loaded with liquefied natural gas to pass through the Strait of Hormuz in weeks of war, according to traders involved in the transit, a ban that risks exacerbating global shortages.

Two tankers loaded with Qatari LNG appeared to be making an exit from the Persian Gulf on Monday, only to U-turn within hours. They were denied clearance by Iranian officials, said the traders, who requested anonymity as they aren't authorized to speak with media.

That abrupt reversal underlines an apparent interdiction in place since the US and Israel began strikes on Iran at the end of February. Traffic through the strait has dropped sharply since then, but oil tankers and others have trickled through the narrow waterway, usually with Iranian permission – while a fifth of the world's LNG supply remains cut off.

Instead, loaded carriers are currently scattered around the gulf, either because they aren't currently part of talks with Iran for passage, or haven't been granted approval, the people said. Ship-tracking data show over a dozen loaded LNG tankers idling in the area.

It is possible that vessels escaped detection by turning off their transponders or that signal jamming impeded accurate tracking. Traders and ship-tracking data, however, point to only one LNG

tanker which traveled through Hormuz earlier this month – without a cargo.

Qatar has been forced to shut its giant Ras Laffan export plant following Iranian attacks last month. Even so, resuming traffic through Hormuz would be a boost, as free passage would allow the country to send shipments that are already loaded. It could also offload fuel from storage, and even begin planning to restart parts of its export plant.

Without that gas, the conflict in the Middle East has turned a market with looming oversupply into one contemplating a shortfall. That has sent consumers seeking alternative fuels – Japan and Bangladesh are among nations that are already turning back to rely more on dirtier coal, while Taiwan has spent hundreds of millions of dollars to secure spot LNG cargoes.

Countries including Pakistan, Thailand and India have made agreements with Iran to secure access to trapped oil tankers. In recent days, even vessels with links to Japan and France have secured passage, though the details behind those transits are unclear.

President Donald Trump has insisted that freedom of navigation through Hormuz be part of any deal to end the war with Iran. He said Monday that reopening the strait was “a very big priority”.



EGA OUTLINES RECOVERY AFTER AL TAWEELAH ATTACK

Emirates Global Aluminium has issued an initial operational update following the recent missile and drone strikes on its Al Taweelah complex, confirming extensive damage and a prolonged recovery timeline.

The facility, located within Khalifa Economic Zone Abu Dhabi, was fully evacuated as a precaution, with all major units placed into emergency shutdown. The affected assets include the smelter, caphouse, power plant, alumina refinery and recycling plant, all of which form a critical part of the company's global production network.

EGA said restoration of primary aluminium output will require significant repairs and a phased restart of reduction cells, with early estimates indicating that full recovery could take up to 12 months. The restart process is expected to be gradual, reflecting the technical complexity of smelter operations and the need to ensure safe recommissioning.

While the smelter faces a longer timeline, the company indicated that parts of the alumina refinery and recycling plant may resume operations sooner, depending on the outcome of detailed damage assessments currently under way.

Chief executive Abdunasser Bin Kalban said the company's immediate priority remains the wellbeing of its workforce. "We are deeply disturbed by this attack on our people, who come from more than 40 nations and were simply doing their jobs. We thank God no one received life-threatening injuries and that those hurt are recovering well.

"Our Al Taweelah site is a foundation of the global economy, and a significant contributor to global supply, making this incident damaging to industries and prosperity worldwide. We will do our very best to support our customers around the world during this difficult period. We are working directly with customers whose deliveries might be impacted by the situation at Al Taweelah."

The Al Taweelah site is one of the largest aluminium production complexes globally, producing 1.6 million tonnes of cast metal in 2025. It also houses an alumina refinery with annual output of 2.4 million tonnes, supplying nearly half of EGA's alumina requirements, and a recycling plant with a capacity of 185,000 tonnes per year.

To mitigate supply disruptions, EGA confirmed it holds significant metal inventories, both in transit and at storage locations within the UAE and internationally. These reserves are expected to provide short-term support to customers while recovery efforts continue.

The company is coordinating closely with stakeholders to manage the operational and commercial impact, while maintaining strict safety protocols during the restoration phase.

Industry analysts note that disruptions at Al Taweelah could have broader implications for global aluminium markets, given the facility's scale and strategic importance. EGA said it will continue to provide updates as assessments progress and recovery plans are refined.



MAJOR ANNOUNCES OPTIMUMWIRE® THERMO SCREEN AT CONEXPO/CON-AGG 2026

MAJOR, a leading global manufacturer of high-performance wire screen media, will debut the OPTIMUMWIRE® Thermo Screen at CONEXPO/CON-AGG 2026. Visitors can see the technology at Booth C32269 in the Las Vegas Convention Center's Central Hall. Engineered for extreme heat environments, the Thermo Screen delivers reliable performance in demanding applications such as asphalt recycling, hot clinker and quicklime screening and mineral processing. Its advanced design withstands temperatures over 2,192 degrees Fahrenheit (1,200 degrees Celsius), helping operations maintain uptime and reduce costly maintenance.

"Customers have relied on us for custom solutions to blinding and pegging problems for years," said Bernard Betts, president of MAJOR. "The Thermo Screen extends that expertise to high-heat applications, so operations can work with one trusted screen media provider across their entire site."

Thermo Screen eliminates heat-related blinding, pegging and clogging and creates a self-cleaning action. An asphalt production plant reported up to 35% higher throughput and 40% lower maintenance costs after replacing traditional screens with Thermo Screens on all decks. The upgrade also improved screen media durability.

Traditionally, MAJOR uses polyurethane to connect wires in its tensioned and modular screen media. However, in high-heat environments, polyurethane can melt, reducing performance. To overcome this challenge, MAJOR developed a screen media option that connects using its proprietary OPTIMUMWIRE. MAJOR produces OPTIMUMWIRE in-house and never alters

its composition, ensuring consistent quality and reliable performance for customers over time. The upgraded design provides consistent performance regardless of weather or material challenges.

The OPTIMUMWIRE® Thermo Screen expands MAJOR's product line, a staple alongside their FLEX-MAT Tensioned, FLEX-MAT Modular screen media and their traditional woven wire, giving producers a complete solution for every screening need. Learn more at www.majorflexmat.com.

About MAJOR

MAJOR is an innovative global manufacturer of wire screens for the aggregate, mining and recycling industries. FLEX-MAT®, the company's renowned line of distinctive lime-green high vibration screens made with OPTIMUMWIRE® "The longest-lasting wire" sets the standard in lowering cost of production per ton by dramatically increasing throughput and wear life while eliminating blinding and pegging. MAJOR masters wire quality, screen manufacturing and the screening process, and provides on-site screening performance assessment and training seminars on screen maintenance and screening efficiency to help producers increase their screening performance and profitability. MAJOR is a Haver & Boecker company.

MAJOR, 225 North Montcalm Blvd., Candiac, Québec, Canada J5R 3L6; Phone 450 659-7681, Fax 450 659-5570; info@majorflexmat.com; Twitter; Vimeo; LinkedIn; or www.majorflexmat.com.

Strong surface support with welded mining mesh

Our steel welded mining mesh is designed to provide reliable ground support in demanding environments — offering high tensile strength, long-term corrosion resistance, and consistent weld integrity to support stability under high-stress conditions. Key performance benefits include optimized load distribution, reduced deformation, efficient shotcrete application, and fast, easy installation — helping minimize downtime while improving underground safety. Combined with our ground support bolts, the mesh forms a complete, integrated ground support system that addresses all aspects of ground control.

Scan the QR-code for more information:



Advancing ground support with integrated solutions.



VERIDAPT SMASHES MYTHS WITH MAD MAX-INSPIRED MINE FUEL TECH VIDEO



Fuel management technology group VERIDAPT has launched a unique and engaging product video, narrated by Robert Lee—the familiar voice of the MythBusters TV series—to demonstrate the extreme durability of its hardware under some of the harshest operating conditions found on mine sites worldwide.

Implementing a robust fuel management system (FMS) delivers significant benefits for the complex operations of mining and rail companies. These include substantial cost savings through optimized fuel consumption, improved routing, and the identification of inefficiencies. By encouraging better operational practices, companies can achieve measurable reductions in fuel use.

Filmed on location at the set of the recent Mad Max: Furiosa blockbuster, the campaign places VERIDAPT’s hardware under intense real-world testing conditions. Led by renowned camera operator Anthony Rose, the production subjects the equipment to extreme scenarios involving flamethrowers, ice, dust, continuous vibration, and high-impact stress.

Anthony Rose is widely regarded as one of Australia’s most accomplished music video and commercial directors, having directed over 250 videos

and numerous television commercials throughout a career spanning more than two decades. His involvement brings both cinematic quality and creative impact to the campaign.

“Our aim was to highlight that VERIDAPT hardware can be reliably deployed in some of the most unforgiving locations on earth—and has been trusted by the world’s largest mining and commercial rail companies for over twenty years,” said VERIDAPT co-founder Sean Birrell.

He added that while the campaign adopts a playful and visually striking approach, it delivers a serious message about the importance of reliable field hardware. “Reliable hardware is critical for maximizing fuel efficiency and ensuring environmental compliance through continuous data generation,” Birrell explained. “This guarantees accurate, real-time reconciliation 24/7.”

The video has been produced in multiple formats, ranging from short 20-second clips to a full four-minute feature. While all VERIDAPT products undergo rigorous laboratory testing during development, the campaign demonstrates durability that goes far beyond what most real-world environments would typically demand.

Setting the Separation Standard for 75 Years

Derrick® is here to solve the toughest mineral processing challenges. For decades, we’ve helped operations achieve finer cuts, higher recoveries and more efficient circuits.

Our screening and separation technologies are engineered around real world mineral processing challenges, built to deliver consistent performance where it matters most.

Thank you for 75 years of trust in the field.



Explore Our Legacy



8-Deck SuperStack®



Dual Pool® 800 Series



WaveStack™



CAT'S ARTIFICIAL INTELLIGENT ASSISTANT

Caterpillar unveiled Cat AI Assistant, an artificial intelligence-based solution that helps customers gain knowledge on the supplier's offerings and solutions. The assistant is designed to help customers buy, maintain, manage and operate their equipment, Cat said.

The assistant is conversational and draws on information from across the entire Caterpillar enterprise when advising. It can help manage the data on a customer's equipment and give

“insights and recommendations” for maintenance, the supplier said. It can inform technicians on maintenance and repair tasks. For operators, it can serve as a coach, “providing operators with information to work smarter and safer without switching screens, returning to the yard, or losing focus.”

The Cat AI Assistant is scheduled for release in Q1.

HA20 RTJ
ARTICULATING
BOOM

- > Maximized uptime
- > High safety
- > Optimal productivity
- > Excellent rough terrain performance

And more capacities with
Haulotte  **EXTRA REACH**

Haulotte Africa - Rue Emile Zola
42420 Lorette - France
Tel: +33 (0)4 77 29 24 24
Email: info@haulotte.com
www.haulotte-africa.com



LOW GRADE GOLD MINE BOOSTS RECOVERY WITH STEINERT SORTING TECHNOLOGY



The Navachab Gold Mine, a low-grade gold ore operation in Namibia, has been able to upgrade its operations and double its ore grade using STEINERT's suite of innovative dry sorting processes.

As the STEINERT machines require a minimum of water the technology is very environmentally friendly. The very low operating costs and modularity make the machine very easy to integrate into existing circuits.

Navachab has been using STEINERT XSS T sorters since 2016. Over the last decade, these sorters have preconcentrated over 10 million t of low-grade stockpiles and turned it into valuable ore, which were previously considered uneconomical to process. Navachab Gold Mine has now installed the next generation of STEINERT's sorting systems.

Hildbrand Wilhelm – after decades of performing various senior management roles at the mine – is now responsible for proposing the future of the Navachab Gold Mine mine: “The more of a holistic view you have, the better you can decide what technologies can work, as long as you understand these technologies.”

The next evolution being considered is a doubling of current treatment capability. Compared to previous processes using dense media separation (DMS), dry, sensor-based sorting now runs at 1/4 of the overall operational costs, while doubling throughput. For these reasons, and because this process does not require water, it plays a key role in the future.

From single sensor to multi-sensor sorting

The metallurgist is amazed by the detection rate per second – and the fact that the dry sorting plant sorts 200 tph to detect material falling below the CIP plant cut-off grade. “That is where the value is generated because then – with the doubled grade – the material can be profitably treated by the downstream processes”, he emphasised.

The former sorting systems were robust, reliable and withstood 10 years of harsh and dusty mining conditions. “But I think the computer programs hold the key to sorting. The most important thing is that the machines can be taught which is what STEINERT has done very well.” This statement is a compliment to STEINERT's engineers – for their ability and desire to explain technology and share knowledge, for example John Knouwds, STEINERT's Solution Manager in Mining.

As STEINERT's detectors developed, the opportunity was taken to test the Navachab ore response to a combination of sensors in order to improve gold recovery. The testwork results indicated that improvements were possible and when the time finally came to replace the single-sensor machine, it was decided to incorporate the new technology.

Sensor-based sorting combined with Intelligent.Declustering for increased throughput

STEINERT has a new solution in the field of data interpretation. Particle sorting technology typically analyses and makes decisions regarding individual defined particles on the conveyor belt. When increasing throughputs, there is a higher chance for composite objects to be identified as only one particle. This can result in incorrect sorting decisions, such as valuable ore being classified as waste, or waste being classified as a valuable material. With STEINERT's Intelligent.Declustering, the software extracts the individual rock from the cluster, even if the particles are very close together, and analyses it. The benefit of this process is that it now makes goals which were previously mutually exclusive compatible.

STEINERT KSS EVO 6.0: Easy to maintain, time-saving, and safe. The concept of the STEINERT KSS itself is not new. What is new is that the Navachab Gold Mine has opted for a multi-sensor sorting solution and is now benefitting from updating the STEINERT KSS to the EVO 6.0 version. Regular maintenance keeps performance at the highest level and reduces wear, and the EVO 6.0 generation significantly improves sorting system handling.

VOLVO ELEVATES DEMOLITION WITH NEW EC950 HIGH REACH



Volvo Construction Equipment announced the launch of the EC950 High Reach, their largest high-reach excavator. This new machine joins the EC400 High Reach, EC500 High Reach, and EC750 High Reach models in the Volvo portfolio.

Watch a video on the EC950 High Reach.

The construction industry increasingly favors high-reach dismantling for multi-story projects. Purpose-built excavators offer a safer and more controlled solution for these demands. The EC950 High Reach combines a modular multi-configuration design with outstanding stability, advanced demolition technology, and industry-leading safety features. It delivers powerful, reliable, and efficient performance on the tallest and tightest jobsites.

“The EC950 High Reach is the latest Special Application Solution from Volvo. It has an operating weight of over 400,000 pounds and maximum height of 161 feet while working with a 7,500-pound tool. It combines size, strength and intelligent design to enable customers to achieve outstanding results on the largest and most challenging demolition projects,” Tony den Hoed, director of strategic demolition accounts for Volvo Construction Equipment North America, said.

Volvo engineers developed the EC950 High Reach in collaboration with Volvo-authorized partners. Volvo CE North America and its local dealer network provide all aftermarket parts and the warranty.

Modular design facilitates transport

Customers operating machines of this scale often face transportation challenges. Volvo considered every element of the EC950 High Reach’s design—including weight, height, and length—to ensure it remains within standard transportation dimensions. A modular multi-configuration boom and arm concept facilitates simple assembly and disassembly. Innovative solutions for easier transportation complement this design, including a hydraulic removable counterweight, detachable side tracks, modular boom and arm sections, and hinged walkways.

The undercarriage’s modular design, featuring hook-on track units, further reduces the transport weight of separate machine parts. With a maximum transport height of just 11 ft. 9 in. (3.6 m), hook-on-type modular joints, and hydraulic cylinder-type pins, the machine quickly configures on-site to suit specific job requirements. This flexible design reduces transportation costs and complexity. It also enables demolition contractors to use the same machine across multiple applications with various pin heights and allowed tool weights, minimizing initial investment and maximizing return.

Unrivaled stability and strength

Volvo offers a machine capable of handling the harshest demolition site conditions. It delivers safe, reliable, and consistent performance. Built to meet Volvo Ultra High Reach (UHR) stability criteria, the EC950 High Reach provides exceptional stability, even with heavy attachments and extended reach. The durable Volvo undercarriage, combined with a purpose-built upper frame featuring a boom adapter and larger boom and cylinder pins,

offers the necessary strength and durability for high-stress demolition environments. A specially developed ring gear withstands the enormous forces a machine of this size generates.

Advanced demolition features boost productivity and safety

The EC950 High Reach comes equipped with a comprehensive suite of demolition-specific features. These features improve operator comfort, enhance visibility, and increase jobsite safety. A tilting cab, with up to 30° of tilt, provides excellent upward visibility. The removable 84,000-lb. (38.1-ton) counterweight and new undercarriage design support safer handling of heavy loads. The Volvo total moment indicator (TMI) provides real-time safety monitoring, giving operators continuous feedback to prevent tipping or overloading. This ensures safer, more efficient demolition operations. Volvo Smart View cameras, with optional obstacle detection, enhance safety for operators and site teams.

The high-visibility cab features P5A certified polycarbonate windows and a frame-mounted falling object guard (FOG), protecting operators from falling debris. Additional features such as undercover protection, full track guards, a slew ring cover, and boom and bucket cylinder protectors safeguard critical machine components. CareTrack standard telematics and ActiveCare Direct advanced telematics provide real-time machine health data and predictive maintenance alerts to keep fleets productive and protected.

Industry-leading operator environment

The EC950 High Reach continues Volvo’s reputation for providing industry-leading operator environments. Inside the spacious, low-noise cab, all machine interfaces—including joysticks, keypad, and LCD monitor—are ergonomically positioned for intuitive and efficient operation. A wide door opening provides easy cab access, while hydraulic dampening mounts and sound-absorbing lining reduce shock, vibration, and noise levels.

A fully adjustable ergonomic seat, with an independently moving joystick console, allows operators to tailor the cab to their preferred working position, supporting comfort, safety, and productivity over long shifts. An integrated heating and air conditioning system distributes pressurized, filtered air through multiple vents to maintain a comfortable working environment, regardless of weather.

Cleaner, safer worksites with integrated dust suppression

In response to increasing scrutiny and regulation regarding dust creation in demolition, the EC950 High Reach includes an integrated dust suppression and cleaning system. Dual water spray nozzles effectively control airborne dust, while a high-pressure washer helps keep components clean during operation. This results in a cleaner working environment for those in the cab, on the jobsite, and in the local community. The system also aims to keep key components clean, improving machine longevity and reducing maintenance requirements.

The EC950 High Reach is currently available in North America. For more information, visit www.Volvo.com



Testing solutions for the global mining sector

Alex Stewart International and its worldwide group of companies operates in more than 40 countries, providing exceptional inspection and laboratory analysis services to the metal trade and mining industry.

“We maintain a dedicated, highly professional yet personalised approach to all of our customers. We provide exceptional technical expertise for inspection, weighing, sampling, analysis, testing and operational auditing of all commodities, materials and products,” explains ASI Group Commercial Executive, Stephen Russell.

ASI’s global inspection and sampling services are strengthened significantly by fast and accurate laboratory analysis and testing from the group’s UKAS ISO17025-accredited metal testing laboratory in Liverpool, England.

This covers nonferrous and ferrous ores, as well as concentrates, minor metals, precious and platinum group metals, ferro-alloys, recycled scrap metal, complex materials and plastics, fuels, agricultural, soft commodities and food products.

World-class inspection services

“Our inspection services include supervision of loading and discharge, weighing and sampling services,” Russell continues. “Our highly experienced inspectors, cargo surveyors and cargo superintendents provide high-quality inspection services to meet the specific requirements of mining companies, international traders, metal producers and refiners, farming and agricultural traders,

banks and financial institutions, shipping companies and the general public. This is in accordance with IFIA/TIC-approved standard business terms and conditions.”

For governments around the world, ASI performs the operational auditing of mining concerns and hydrocarbon producers, as well as certification of mineral imports/exports, inspection and analysis of foodstuffs, control of medicines and pharmaceutical products, customs revenue optimisation services and procurement auditing.

Leading lab analysis name in Africa

In Africa, ASI Rwanda Ltd is accredited by EAC standardisation to ISO/IEC 17025 and operates from its office in Rwandan capital Kigali. “Our Rwanda laboratory also provides services for East African and neighboring countries such as Burundi, Tanzania, Uganda, Kenya, RDC, Zimbabwe and Ethiopia,” explains Norman Mwashu, Chief Chemist and Lab Manager at ASI Rwanda.

“This is for the 3Ts – tin, tantalum and tungsten – as well as cobalt, manganese, base and all minor metals, ores and concentrates, while offering a range of geochemical services to the mining and mineral exploration sector.”

ASI Zambia was set up in 2005 and it has continued to develop ever since.

“Our laboratory is strategically located in the centre of Kitwe, in the heart of the Copperbelt Province of Zambia,” explains Meleka Saikolo, ASI Zambia Company Manager.

“Our laboratory provides analysis services for copper, cobalt, base and precious metals, combining traditional wet chemistry methods with state-of-the-art laboratory facilities. In Africa and many other locations around the world, ASI can provide you with world-class services tailored to your specific needs.”

ASI instrumentation

- WDXRF Zetium and PW 1480 (for determining principal and trace elements).
- EDXRF XEPOS.
- ICP-OES spectrometer (for analysing a wide range of elements at ppm for multi-elemental accurate results).
- AAS – Atomic absorption spectroscopy (to measure low levels of elements in all metallurgical materials).
- High precision titrators (for fast and accurate determination of elements including tin, copper, lead, manganese, iron and chromium).
- UV/visible spectrometer.
- Conductivity meter.
- PH-meter.
- Electro-gravimetric set.



Key contacts

ASI Group – Stephen Russell

stephen.russell@alexstewartinternational.com

Rwanda – Norman Mwashu

norman@alexstewartinternationaltd.rw

Zambia – Meleka Saikolo

saikolo.meleka@alexstewartzambia.com



**Alex Stewart
International
Rwanda**

Offering you world-class minor metal/rare earth inspection and analysis services in Rwanda

Alex Stewart International provides a comprehensive range of inspection, weighing, sampling granulometry, sample preparation and analytical services for minor metals and rare earths.

Parts of this market are growing rapidly driven by a sharp increase in demand for battery raw materials and we're very well placed to assist with your inspection, sampling and analysis requirements.

We can test for a range of metal and rare earth elements including:

- Antimony
- Bismuth
- Beryllium
- Cadmium
- Chromium
- Cobalt
- Indium
- Lithium
- Magnesium
- Manganese
- Molybdenum
- Niobium
- Rhenium
- Tantalum
- Titanium
- Tungsten
- Selenium
- Silicon
- Vanadium

For further information about our ISO 17025-accredited analytical services in Kigali, Rwanda, please contact:

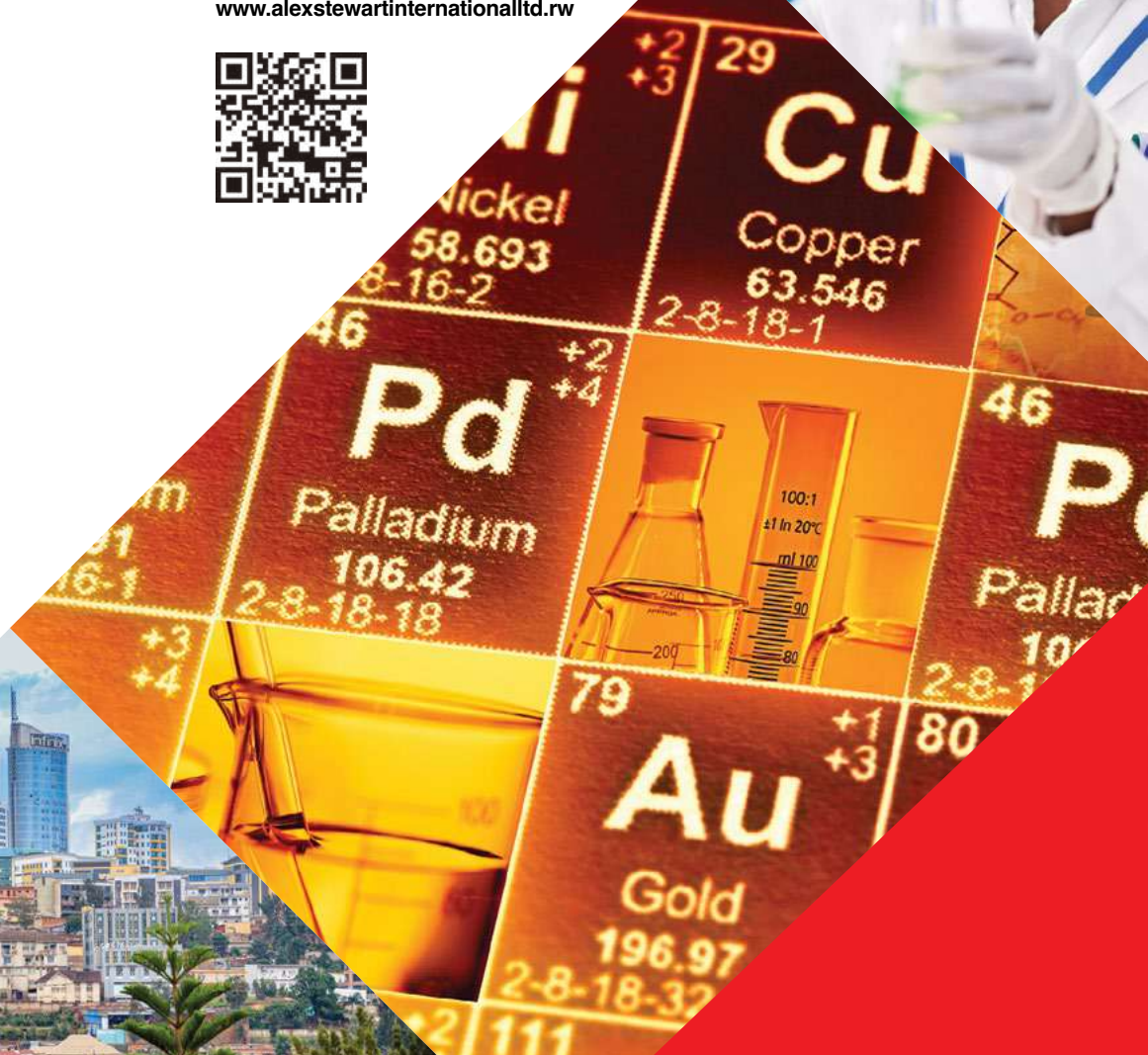
Mr Norman Mwashu

Tel: +250 788 308 077

Email: norman@alexstewartinternationaltd.rw

info@alexstewartinternationaltd.rw

www.alexstewartinternationaltd.rw



Sandvik wins major underground mining equipment order in Australia



Sandvik has received a major underground equipment order from the global mining contractor The Redpath Group for deployment at Evolution Mining's Cowal Gold Operations in New South Wales, Australia. The order is valued at around SEK 420 million and was booked in the fourth quarter of 2025.

The order consists of underground trucks, loaders and drill rigs, with deliveries expected to begin mid-2026 and continue into 2027. In addition to the equipment order, Sandvik will also supply a range of digital solutions, rock tools and consumables, as well as parts, components and related services to support ongoing underground operations.

"We are pleased to strengthen our relationship with Redpath through this contract, which reflects continued confidence in our underground equipment solutions, and our ability to support productivity, safety and sustainability in complex underground mining operations," says Mats Eriksson, President of business area Mining at Sandvik.

Cowal Gold Operations is a long-life gold mining operation in New South Wales, Australia, which comprises both open pit and underground mining operations.

EURO MINE EXPO

26-28 MAY 2026
SKELLEFTEÅ, SWEDEN

Cutting-edge innovations and the latest methods in mining, right at the heart of the Nordic mining industry.

EURO MINE TECH TALKS

World-class conference focused on innovation, responsibility and safety. Gain exclusive insights from industry leaders like Boliden, ABB, Metso, LKAB and Sandvik as they tackle the electric shift, digital transformation and the next generation of workplace safety.



200
EXHIBITORS



>50%
MANAGERS



>40
NATIONS



**Euro
Mine Expo**

www.euromineexpo.com

GOLD SPONSORS:

BOLIDEN

LKAB

Metso

ORGANISER:

NOLIA



CATERPILLAR AND NVIDIA TEAM UP TO TRANSFORM MINING OPERATIONS AND MANUFACTURING

Caterpillar has expanded its partnership with Nvidia to bring AI-driven solutions to mining and construction operations, delivering next-generation tools for operators, dealers, and industry professionals. The collaboration focuses on enhancing machine intelligence, productivity, and safety while modernizing manufacturing and supply chain processes.

AI-Equipped Mining and Construction Machines

Using Nvidia's Jetson Thor platform, Caterpillar is enabling real-time AI inference on Cat construction, mining, and power equipment. This technology lays the foundation for AI-assisted operations, intelligent in-cab experiences, and potentially autonomous machinery—all designed to help operators navigate complex and variable jobsite conditions more efficiently.

Key innovations include:

- In-cab AI features: Personalized coaching, productivity insights, and safety alerts to guide operators in real time.
- Autonomy at scale: AI-driven recommendations for excavators, haul trucks, dozers, and compactors, enabling smarter decision-making on the jobsite.
- Advanced machine intelligence: Fleets equipped with machine learning, computer vision, and edge computing, processing sensor data to act as a digital nervous system across operations.
- At CES 2026, Caterpillar unveiled automated excavators, wheel

loaders, haul trucks, dozers, and compactors, showcasing operator-free trenching, loading, grading, hauling, and rolling—technologies that can be transformative for large-scale mining operations like those on the Copperbelt.

Cat AI Assistant

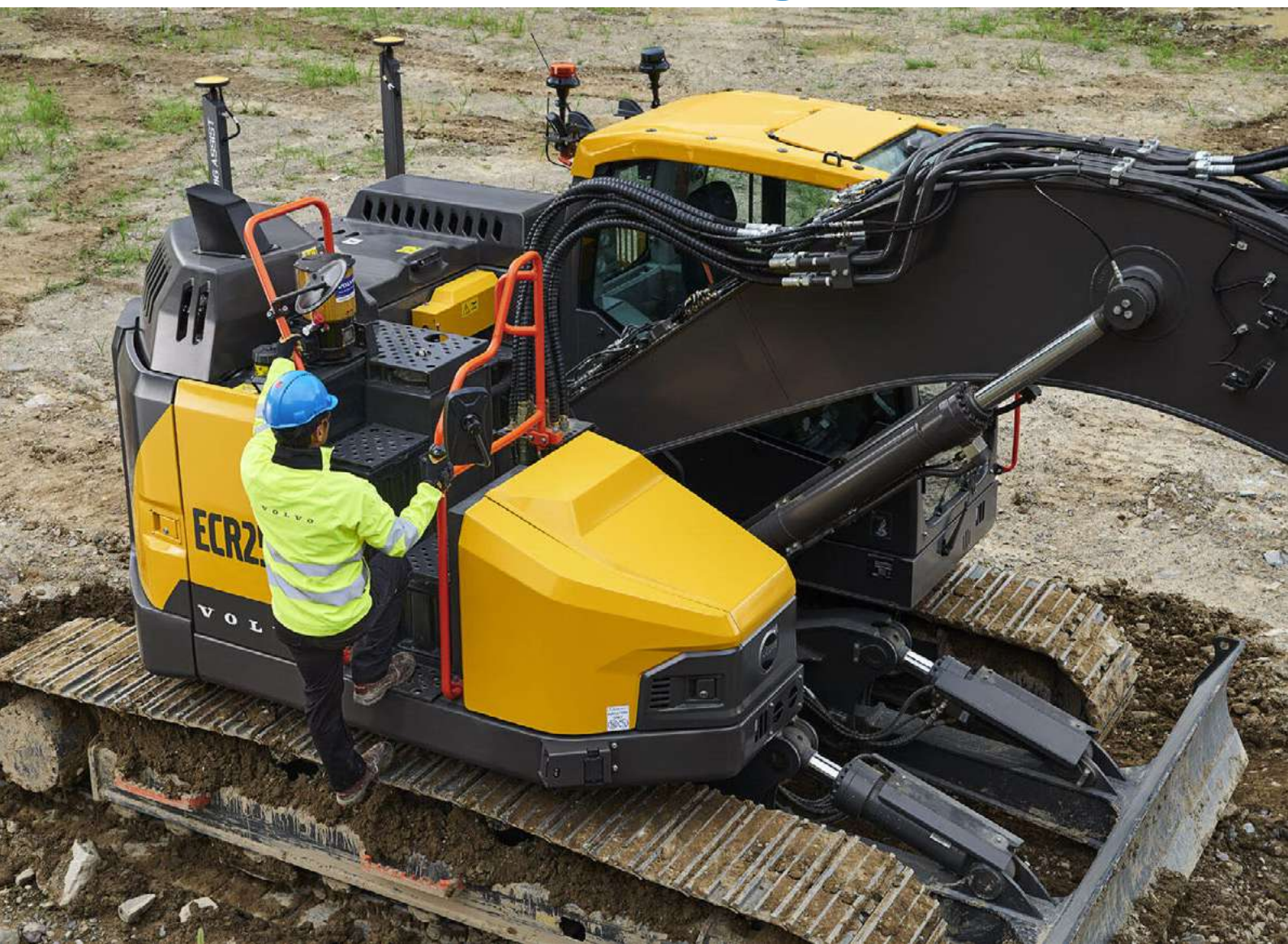
Caterpillar also introduced the Cat AI Assistant, a voice-activated, in-cab assistant designed to answer operational questions, provide maintenance guidance, and deliver personalized equipment recommendations. Built with Nvidia Riva open speech models, it enables operators to troubleshoot, adjust settings, and access Cat resources using simple voice commands.

Transforming Manufacturing and Supply Chains

Beyond the mine, Caterpillar is deploying Nvidia AI Factory to automate key manufacturing and supply chain processes, including forecasting and scheduling. By leveraging AI, companies can accelerate production timelines, reduce downtime, and optimize resource allocation—benefits that can extend to Zambia's mining and industrial sectors, where efficient supply chain management is critical.

Through this partnership, Caterpillar and Nvidia are bringing AI to the forefront of mining operations, demonstrating how intelligent machinery and digital tools can enhance productivity, safety, and operational efficiency on modern mines and industrial sites.

Volvo's New ECR255 Excavator: More Power in Tight Spaces



Volvo Construction Equipment (Volvo CE) continues its largest product rollout in 20 years with the new 25-ton short-swing ECR255 excavator, designed for maximum performance in confined work sites. Replacing the ECR235E, the ECR255 offers a 7% increase in lift capacity, an 80-horsepower engine boost, and a 10% reduction in fuel consumption compared with its predecessor.

Enhanced Operator Comfort

The ECR255 features a cab 20% larger than typical short-swinging models, with reduced noise, improved ergonomics, and productivity-focused amenities. The Volvo Co-Pilot display is larger and higher-resolution, offering customizable machine settings. Operators also benefit from Bluetooth connectivity, wireless phone charging, and a dedicated heating/cooling compartment for food and drinks.

Performance and Efficiency

Powered by the Volvo D6L engine, compliant with European Stage V and U.S. Tier 4 Final emissions standards, the ECR255 delivers smoother, fuel-efficient operation with advanced electro-hydraulic controls. Features include smart cooling, engine speed regulation, auto-idling, automatic engine shutdown, and customizable work modes.

Advanced Technology Options

Volvo Smart View with obstacle detection provides a 360-degree view of the machine's surroundings, distinguishing humans from objects for added safety. Operators can also take advantage of Volvo Active Control, which automates boom and bucket movements for faster, more accurate digging and grading, completing tasks up to 45% faster and reducing fatigue.

With its combination of power, precision, and operator comfort, the new ECR255 sets a new benchmark for short-swing excavators operating in confined environments.

A LONG WAY TOGETHER



BKT

GROWING TOGETHER



bkt-tires.com
in f t v i



KSB LAUNCHES REVOLUTIONARY IMVUBU WASTEWATER PUMP

New pump has a big “mouth” and enough power to manage solids

KSB has officially launched the KSB ELN-150 Imvubu, a rugged new self-priming wastewater pump developed and built in South Africa specifically for African operating conditions.

Named after the Imvubu which is the Zulu word for hippopotamus, then name carries a double meaning referring to its distinctive top-mounted lifting “ears” that mimic its profile in water, while its massive free-pass mouth and formidable strength mirrors the exceptional solids handling ability that swallows-up oversized waste and attests to the toughness and power of its design.

KSB Pumps and Valves product manager for wastewater, Hugo du Plessis, says the KSB Imvubu is the result of years of development which measured the strengths and limitations of earlier self-priming pumps used in municipal wastewater networks across Southern Africa. During this time KSB Pumps and Valves engineering team worked closely with municipalities and industry operators to understand the realities they face daily including clogging, solids carry-over, complex maintenance, pump failures in remote areas and the need for equipment that is easy to service in places where skills are often scarce and uptime is critical to prevent spills.

“We live in South Africa and can see the challenges of dealing with sewerage and waste water. We also listened to the market where customers told us exactly where the problems lie in terms of pump clogging, difficult seal replacement, thin casings that wear quickly and designs that simply do not stand up to raw,

unscreened sewage. This culminated in the development of the KSB Imvubu pump which is our answer to the market’s needs. It is proudly designed and manufactured in South Africa and takes the best global technology and optimises it for African conditions,” says du Plessis.

He explains that the KSB Imvubu pump was developed using advanced CFD (Computational Fluid Dynamics) modelling and efficiency redesigns of the impeller, volute and hydraulic passageways. The result is significantly improved pumping performance, now reaching more than 65% hydraulic efficiency which places it well ahead of competitor self-priming pumps currently in service. Critically, the pump achieves a 77.3 mm free-pass solids handling capability exceeding the global raw sewage benchmark of 76 mm. In real-world operation, that 1.3 mm can be the difference between uninterrupted pumping and a costly blockage.

“The free pass is what sets us apart. It is market leading and equates to the fact that if a pump can pass a bigger solid it will clog less. It is that simple and less clogging means less callouts, less downtime and less cost.”

In addition, the KSB Imvubu features bearings-for-life with no oil lubrication required. Unlike competing pumps that require oil chambers, top-up checks and contamination risk, the KSB Imvubu pump uses grease-for-life bearings and KSB’s own mechanical seal which is lubricated by the pumped medium itself.



The new locally designed and manufactured KSB ELN-150 Imvubu pump is a breakthrough in wastewater handling in South Africa



The new KSB ELN-150 is also known as the Imvubu or hippo pump due to its unique lifting "ears" which give it a resemblance to the animal

This makes the pump environmentally cleaner, safer to maintain and significantly simpler to service. The pump body is also cast with thick, heavy-duty volute walls to resist erosion and extend operating life, while its smart design includes an inspection hatch that allows staff to clear blockages without removing the suction cover which is a major advantage for treatment plant technicians and municipal maintenance teams.

"We know that South Africa's wastewater infrastructure is under immense strain with limited resources and ever-rising sewage volumes which means equipment must be robust and easy to service to ensure its longevity. These are exactly the issues we have considered and served as guiding principles for our Imvubu pump and our design directly addresses the problems encountered in the field. We have made this pump for Africa and that is why we made it to be maintained using basic tools and why it can be speed-adjusted using simple pulley changes. It can also do the job of two pumps simply by moving from low to high heads and low to high flows easily with no need for a second pump. It can even be mounted on diesel skids for remote pumping or flood emergency use. It is versatile, strong and practical," says Hugo.

Applications extend beyond municipal wastewater to mining sumps, industrial effluent, pulp and paper, agricultural waste dams, river abstraction and portable dewatering units. The pump has already proven itself during extended testing at the Drakenstein Wastewater Treatment Works in the Western Cape where it has operated continuously with excellent results.

Because the KSB Imvubu pump is 100% locally manufactured,

it aligns strongly with the Department of Trade and Industry's localisation incentives supporting South African industry and local employment. It also positions KSB Pumps and Valves as a major contributor in the export of high value engineered products into Sub-Saharan Africa and other regions where similarly robust and versatile pumps are required.

"This is a pump we are proud to build in South Africa as it keeps our people employed and shows that we can compete and lead international brands. We like to think that we do not follow, we leapfrog. Our Imvubu pump is a direct answer for many of the failures making national headlines and the timing in this period of regeneration could not be more significant. Municipalities and utilities urgently need equipment that can keep working away with minimum attention and maintenance to clear the backlog – and we are proud to say the answer is the KSB Imvubu," Hugo concludes.

<<Tech specs>>

OPERATING CHARACTERISTICS

- **Max Flow:** 429.4m³/h
- **Max Head:** 47.6m
- **Suction Size:** 150NB (6")
- **Discharge Size:** 150NB (6")
- **Solids Handling:** 77.3mm
- **BEP Flow:** 305m³/h
- **BEP Head:** 33m
- **BEP η:** 65%
- **Temperature:** up to 80°C

HITACHI CONSTRUCTION MACHINERY TO REBRAND AS “LANDCROS” FROM 2027



Hitachi Construction Machinery has announced that it will officially rebrand as Landcros beginning in April 2027, marking a major strategic shift as the company evolves from a traditional equipment manufacturer into a technology-driven solutions provider.

The new corporate and brand name will be rolled out globally across all equipment, parts, and dealer networks. While the branding and decals will change, the company confirmed that model names, machine colours, and core product specifications will remain unchanged. Landcros machines will continue to feature Hitachi’s signature “Reliable Orange,” and customers will retain access to the same authorised dealers, service teams, and warranty policies.

According to Hitachi, the rebrand will not affect manufacturing operations, organisational structure, or product availability.

“The same ‘Reliable Orange’ we love to see on jobsites will remain,” said Simon Wilson, chief operating officer of Hitachi Construction Machinery Americas. “This change will not impact how customers work with our machines or dealers. Instead, it reflects our renewed commitment to delivering solutions that address real jobsite challenges.”

From machinery manufacturer to solutions provider
The Landcros name has already been introduced to the industry through Landcros One, a next-generation concept excavator unveiled at Bauma 2025 in collaboration with Italian design firm Granstudio. The futuristic machine showcased Hitachi’s vision for the future of construction and mining equipment.

BUILT TO LAST:

PROUDLY SERVING OPERATIONS LIKE YOURS SINCE 1945

Our custom Armored Hose & Armor-Flex Assemblies are built to perform in the harshest conditions, making it the ultimate choice for mining and construction applications.

- ★ **Top-Tier Protection**
- 🔥 **High Resistance to Abrasion & Extreme Pressure**
- 🔍 **Easy Identification**
- ⚙️ **Customizable**
- 🛡️ **Safe & Value Adding**

READY TO ARMOR UP YOUR HOSE ASSEMBLIES?

Scan Below for More or Contact Us at: www.nrpjones.com



Pressure measurement for your process? Leave it to us!



Our technologies offer everything you need for process, hydrostatic, and differential pressure for mining. Around the world, VEGA pressure solutions stand for proven reliability and trend-setting innovation. Our pressure measurement solutions go beyond just efficient, optimised processes – they provide you with peace of mind, knowing that you've chosen the best technology available.

Everything is possible. With VEGA.

MINING EXCELLENCE

Precision. Innovation. Sustainability.

With decades of expertise in large-scale mining, we deliver tailored blasting solutions that maximize productivity. Combining technical mastery with a safety-first approach, we act as true collaborators in customer success. Our precision, innovation, and commitment to environmental stewardship set us apart.



AUSTIN POWDER

austinpowder.com
info@austinpowder.com

**INNOVATION
THAT MATTERS**



OPENING REMARKS BY THE HONOURABLE MINISTER OF MINERAL AND PETROLEUM RESOURCES MR GWEDE MANTASHE (MP)

Master of Ceremonies; Your Excellencies; Ministers and Deputy Ministers, including the Deputy Minister of Mineral and Petroleum Resources, Ms Phumzile Mgcina; Members of the Diplomatic Corps; the organisers of the Investing in African Mining Indaba; Captains of Industry and members of the investment community; the leadership of organised labour, civil society and our communities; and all distinguished guests.

It is both an honour and a privilege to welcome you once again to South Africa for the 32nd Investing in African Mining Indaba.

This year's Indaba takes place at a time of profound global uncertainty. We are witnessing heightened geopolitical tensions, driven largely by competition among some developed economies seeking greater control over the natural resources of developing nations. This dynamic poses a serious threat to the sovereignty of resource-endowed countries, the majority of which are located here on the African continent.

It is therefore fitting that the theme of this year's Indaba is "Stronger Together: Progress Through Partnerships." For us, this is not merely a slogan, but a strategic imperative. Africa must act collectively, speak with one voice, and resist the destructive race to the bottom in our engagement with global powers and investors.

It is in this spirit that we convened the second edition of the African Ministers' Critical Minerals Roundtable, in partnership with the African Union. This platform brought together governments, investors and strategic partners to strengthen continental leadership on critical minerals. Our objective is to deepen collaboration, accelerate responsible exploration and mining, and ensure that Africa captures greater value from its mineral endowment. As agreed last year, our partnerships must move beyond extraction towards industrialisation and value addition closer to the point of production.

As indicated at last year's Mining Indaba, in 2024 South Africa undertook a comprehensive study on the state of mining, alongside the development of our Critical Minerals Strategy. I am pleased to report that this work has now been completed. The strategy is in place and its implementation is underway. In line with the G20 declaration, this achievement has not only shaped South Africa's critical minerals agenda, but has also positioned Africa more broadly to assert greater control over its strategic resources.

A central pillar of this strategy is the review of our regulatory framework. Allow me to reaffirm our commitment to creating a regulatory environment that is more certain, predictable and transparent—one that attracts investment while ensuring that the benefits of our mineral wealth are shared equitably with all South Africans.

We recognise that exploration is the lifeblood of mining. For this reason,

we have removed the requirement for Black Economic Empowerment participation at the prospecting stage. This is not a retreat from transformation, nor an endorsement of the misguided view that black participation is a barrier to economic growth. Rather, it is a pragmatic recognition that prospecting is a high-risk phase where economic value has yet to be proven. This change is intended to stimulate exploration, increase South Africa's share of global exploration investment, and expand the pipeline of future mines.

Encouragingly, our renewed exploration drive is already bearing fruit. New geological data points to substantial untapped mineral potential beneath South African soil—potential that we are eager to unlock through inclusive development. A powerful example of this progress is the success of projects supported by the Junior Mining Exploration Fund. In the Bothaville district of the Free State, a JMEF-supported project has advanced to an intensive drilling phase targeting rare earth elements and associated minerals, demonstrating that our subsurface potential remains far from fully understood or realised.

The second round of the JMEF is now underway, with 80 applications received targeting minerals including tin, tungsten, titanium, uranium, gold, antimony, arsenic, fluorspar, copper and lithium. To further accelerate exploration, I invite all of you to visit the South African Pavilion for the launch of the Council for Geoscience's Virtual Core Library. This landmark initiative will transform how geological data is accessed, shared and utilised, making South Africa an even more attractive destination for exploration investment.

While our regulatory review process continues, we are encouraged by ongoing investment in the sector. Recent developments include the opening of operations such as the Qala Shallows Gold Mine by West Wits Mining, Arnot OpCo's open-cast colliery, Seriti's Naudesbank Colliery, the commencement of production at Ivanplats' Platreef Mine, and Ikoti Coal's underground operations.

Furthermore, between February 2025 and January 2026, the department granted 358 prospecting rights and 32 mining rights. This reflects continued confidence in South Africa as a mining investment destination of choice. We are committed to honouring that confidence by delivering a fair, efficient and transparent licensing system that supports growth while safeguarding our national interests.

As I conclude, I would like to commend the South African mining industry for achieving the lowest mine fatalities on record. In 2025, fatalities declined to 41, surpassing the previous benchmark of 42 recorded in 2024. While one life lost is one too many, this achievement demonstrates that collective effort brings our Zero-Harm goal increasingly within reach.



OPENING REMARKS BY THE HONOURABLE MINISTER OF MINERAL AND PETROLEUM RESOURCES MR GWEDE MANTASHE (MP)

A surge in regional conflict has disrupted global bullion logistics, with gold shipments stranded in Dubai after widespread flight cancellations linked to escalating tensions involving Iran.

The temporary grounding of flights to and from the emirate—one of the world’s key bullion trading hubs—has left traders unable to move gold and silver, exposing vulnerabilities in the global precious metals supply chain. Dubai plays a central role in refining and exporting bullion to markets across Asia, while also acting as a major transit point for shipments originating from Switzerland and London.

The disruption follows an unprecedented wave of missile strikes, which prompted partial airspace closures in the region and the suspension of multiple passenger flights. As a result, bullion typically transported in aircraft cargo holds has been left grounded, forcing traders and logistics providers to halt shipments indefinitely.

Several industry participants confirmed that consignments scheduled to pass through Dubai were delayed, with teams working urgently to reroute cargo where possible. However, alternative options remain limited. Transporting gold overland to other regional airports is generally considered too risky due to the high value of the cargo and the security challenges involved.

Air transport remains the preferred method for moving bullion globally, largely due to its efficiency and relatively low cost—often less than one dollar per ounce per trip. However, shipments are constrained by insurance limits, which cap the value of metal that can be carried on a single flight rather than its physical weight.

According to logistics experts, while overland transport is

technically possible, it introduces significant complexity. Moving gold by road often requires multiple armored vehicles, armed escorts, and careful coordination across borders—factors that increase both cost and risk. In some cases, regulatory restrictions may also prevent the movement of armed security personnel between countries.

Although the current disruption is expected to be temporary, a prolonged suspension of flights could have wider implications for global bullion markets. Countries such as India, which rely heavily on imports routed through Dubai, may face supply constraints. Early signs of this have already emerged, with gold premiums rising in Saudi Arabia amid concerns over tightening availability.

The scale of the disruption is significant. According to flight tracking data, more than 12,000 flights have been cancelled globally since the initial escalation. Major regional carriers, including Emirates and Etihad Airways, have extended suspensions of their operations, further compounding logistical challenges.

This is not the first time the gold market has faced such constraints. During the early stages of the COVID-19 pandemic in 2020, travel restrictions severely limited the movement of bullion between major trading hubs, creating pricing imbalances and arbitrage opportunities for large financial institutions such as JPMorgan Chase & Co.

As the situation continues to unfold, the disruption highlights the fragility of global supply chains for high-value commodities and the critical role that stable air transport plays in maintaining the flow of precious metals worldwide.



CAT® HYDRAULIC MINING SHOVELS

HIGH LEVELS OF DIGGING PERFORMANCE

WHEN YOU NEED A DURABLE DIGGER TO POWER THROUGH THE TOUGHEST MATERIALS, OUR BROAD LINEUP OF HYDRAULIC MINING SHOVELS DELIVERS.

They've built a name for withstanding the harshest digging conditions on sites around the world, and we're working hard to make sure they keep meeting your expectations for reliable, predictable, efficient and productive performance.

Cat® hydraulic mining shovels are designed with a wide variety of standard and optional features that help make them more productive, more efficient, safer and easier to operate. They're designed for compatibility with Cat trucks, allowing you to build an optimal loading and hauling solution. And each comes with the total package you expect from Caterpillar: deep product expertise, unmatched after-sale support and a commitment to help you squeeze more value and profit out of your operation.



Visit [Cat.com/HMS](https://www.caterpillar.com/HMS) to find the right hydraulic mining shovel for your application.

WESTERN AUSTRALIA EXTENDS GRIFFIN COAL LIFELINE THROUGH 2031



**\$308 MILLION
2031
2GW GENERATION
SHORTFALL BY 2033**

The Western Australian government has confirmed a strategic extension for Griffin Coal operations, ensuring continued production through 2031 despite financial and market challenges. This intervention highlights the complex balancing act faced by resource-dependent economies navigating the global energy transition. Governments must weigh immediate economic and employment concerns against long-term sustainability goals, including environmental commitments and grid stability.

Government Support During Industrial Transitions

Griffin Coal has accumulated A\$1.4 billion in debt since entering receivership in 2021. To maintain production capacity and support regional employment, the state committed A\$308 million from 2022 through 2026. This support secures the Ewington mine's 2.9 million tonnes annual output while allowing time for operational restructuring and customer contract renegotiation. The extension through 2031 provides operational certainty and demonstrates how government intervention can bridge temporary market failures without resorting to indefinite subsidisation.

Key aspects of the restructuring include:

- Negotiating improved commercial terms with major customers to reduce reliance on state support.
- Maintaining production capacity under receivership to ensure energy supply stability.
- Extending state agreements to provide operational certainty through 2031.
- Gradually reducing subsidies while transitioning toward partial support mechanisms.

Energy Security and Renewable Integration

Coal-fired generation remains critical to Western Australia's grid stability, contributing roughly 15% of the South West Interconnected System's capacity. Premature closure of coal operations could create supply vulnerabilities, especially as renewable infrastructure—including large-scale wind, solar, and battery storage—continues under development. The government frames coal as a temporary infrastructure measure that supports the renewable buildout while planning the retirement of state-owned coal facilities by 2030, including the Collie and Muja generators.

Renewable integration challenges include the completion of transmission infrastructure, deployment of battery storage,

weather-dependent generation reliability, and industrial customer adaptation to alternative energy sources. Griffin Coal's continued operation provides a critical buffer during this transition, ensuring energy security while renewable capacity scales up.

Basin-Wide Consolidation and Operational Efficiency

The Collie Basin currently hosts two coal operations: Griffin Coal and Premier Coal. With declining reserves and market pressures, the government has established a taskforce to explore potential consolidation, evaluating whether a single-entity operation would improve efficiency and resource utilisation. Consolidation could bring benefits such as shared processing facilities, streamlined logistics, unified workforce management, and enhanced customer negotiation leverage, though feasibility depends on Premier Coal's willingness to participate.

Community and Economic Considerations

Coal-dependent communities face significant economic vulnerability during energy transitions. The Griffin Coal extension preserves jobs and provides workforce stability in the Collie region, while allowing time for skills retraining and regional economic diversification. Direct employment, supply chain impacts, and regional service industries benefit from continued mining operations, creating a smoother transition path for affected communities.

Investor and Market Implications

Government intervention provides temporary stability but introduces questions regarding long-term commercial viability. Investors must assess policy risk, customer contract volatility, and stranded asset exposure, particularly as renewable energy adoption accelerates. Companies can adapt by pursuing short-to-medium-term contracts aligned

with transition timelines, operational flexibility, diversification into related services, and partnerships with renewable developers for land-use transitions.

Technology and Infrastructure Integration

The successful energy transition relies on coordinated deployment of renewable generation, battery storage, and transmission infrastructure. Coal operations continue to provide baseload reliability, mitigating risks from renewable project delays. Key technology deployment risks include project completion delays, cost and performance uncertainties of battery storage, and regulatory approvals for transmission infrastructure. Properly timed interventions ensure that coal operations act as a bridge to a sustainable renewable future rather than a permanent dependency.

Regulatory and Policy Frameworks

The Western Australian approach demonstrates regulatory flexibility, balancing environmental commitments with economic and community needs. Policy tools such as state agreement extensions, subsidy reduction pathways, and basin consolidation assessments allow for managed transitions. Success is measured by maintaining grid stability, preserving employment, achieving subsidy reduction targets, and adhering to environmental timelines.

Forward-Looking Insights

The Griffin Coal extension offers a case study in managing industrial transitions, showing how coordinated government intervention, community support, commercial restructuring, and technological planning can mitigate the risks of energy transformation. Other jurisdictions can draw lessons on early identification of critical infrastructure dependencies, stakeholder consultation, workforce transition strategies, and alignment of commercial improvements with public support.

When your geological model and your plant don't agree, you don't have a mining problem.



You have a measurement problem.

NextOre bulk magnetic resonance delivers high-precision, on-conveyor grade measurement that closes the feedback loop between plant performance and geological models.

www.nextore.com.au
info@nextore.com.au





SANDVIK, SUBTERRA STRENGTHEN PARTNERSHIP TO ADVANCE FLAMEPROOF UNDERGROUND SOLUTIONS

Sandvik has signed a strategic equipment and services agreement with Subterra Asset Solutions to deliver safer, more reliable and higher-performing flameproof solutions to Australia's underground mining sector.

Under the agreement, Sandvik will supply an initial fleet of 10 new Sandvik LS312 flameproof underground loaders to the specification developed with Subterra. The 12-metric-ton loaders are purpose-built to meet the rigorous demands of underground operations in challenging environments and designed for high-demand applications.

The first Sandvik LS312 units will be shipped from Sandvik's Khomanani production unit in South Africa and are scheduled to arrive in Australia during Q2 2026.

Subterra Asset Solutions is an Australia-based underground mining equipment specialist, providing fleet rental and smart asset management solutions tailored for demanding environments, supported by responsive service and technical expertise.

"Subterra is proud to partner with Sandvik in delivering industry-leading flameproof solutions that prioritize safety

and performance," said Adam Gledhill, CEO of Subterra Asset Solutions. "This partnership allows us to offer our customers the very best in equipment reliability, supported by a service network that understands the unique demands of underground mining."

The partnership combines Sandvik's proven technology leadership with Subterra's deep expertise in fleet rental and asset management, enabling customers to access world-class equipment backed by responsive technical support and lifecycle services.

"Sandvik and Subterra share a strong focus on customer outcomes," said Drew Taylor, Business Line Manager – Mechanical Cutting at Sandvik. "Through this agreement we're not only supplying high-quality loaders, but also building a long-term partnership that supports continuous improvement, customer confidence and sustainable productivity across the industry."

For further information, please contact:

Kate Bills

General Manager – Sustainability, Marketing and Communications
Sandvik

Email: kate.bills@sandvik.com



GLOBAL LEADING MAGNETIC SEPARATORS SUPPLIER

SINCE 1993

30+ YEARS

EXPERIENCE IN MINERAL PROCESSING INDUSTRY



Vertical Ring High Gradient Magnetic Separator (WHIMS), providing the best physical separation and most environmental solution for concentrating minerals.

ROY HILL

HEMATITE TAILINGS RECOVERY

Fully Manufactured under the Australia standard

WHIMS power consumption < 1.5 kWh/t

40 Units of Low Intensity MS (LIMS) & High Intensity MS (WHIMS)

Huate Magnet Group: Empowering the Roy Hill Iron Ore Project, Building a Global Mining Benchmark with Chinese Intelligent Manufacturing

Driven by Huate Magnet Group customized magnetic separation solutions, the Roy Hill Iron Ore Project has achieved remarkable separation performance, delivering outstanding economic and operational benefits.



HUATE MAGNET GROUP CO.,LTD.

Headquarter Add: 6999 Huate Rd, Weifang, Shandong, China.

Email: marketing@chinahuate.com Website: www.huatemagnets.com

Tel: 0086 19862618888



CAT® HYDRAULIC MINING SHOVELS

HIGH LEVELS OF DIGGING PERFORMANCE

WHEN YOU NEED A DURABLE DIGGER TO POWER THROUGH THE TOUGHEST MATERIALS, OUR BROAD LINEUP OF HYDRAULIC MINING SHOVELS DELIVERS.

They've built a name for withstanding the harshest digging conditions on sites around the world, and we're working hard to make sure they keep meeting your expectations for reliable, predictable, efficient and productive performance.

Cat® hydraulic mining shovels are designed with a wide variety of standard and optional features that help make them more productive, more efficient, safer and easier to operate. They're designed for compatibility with Cat trucks, allowing you to build an optimal loading and hauling solution. And each comes with the total package you expect from Caterpillar: deep product expertise, unmatched after-sale support and a commitment to help you squeeze more value and profit out of your operation.



Visit [Cat.com/HMS](https://www.caterpillar.com/HMS) to find the right hydraulic mining shovel for your application.



ADVERTISER'S INDEX

GRX26	02pg	Derrick®	28pg
Austin Powder	03pg	Haulotte	29pg
Heavy Metal	07pg	Alex Stewart International	33pg
Vital Industries	08pg	EURO MINE EXPO	34pg
Huate	10pg	BKT Tires	37pg
Konecranes	11pg	NRP Jones	40pg
Takraf	12pg	VEGA	41pg
Hoeflon	13pg	Austin Powder	42pg
Exponor 2026	15pg	CAT	45pg
Mining Machinery Developments	17pg	Nextore	47pg
Normet	18pg	Huate	49pg
Haver & Boecker Niagara	19pg	CAT	50pg
RM Group UK	22pg	Darda GmbH	51pg
Interstate-McBEE	23pg	Takraf	52pg
SANDVIK	27pg		



INVENTOR OF HYDRAULIC ROCK AND CONCRETE SPLITTERS

Enormous Splitting force up to 413 t

Rock and concrete by nature have low tensile strength. By applying hydraulic force to a wedge, it is possible to tear off large sections of material from the inside in a matter of seconds.

Hydraulic Rock and Concrete Splitters allow controlled, silent and cost-effective operations!

MAIN AREAS OF APPLICATION

- + Demolition of concrete and reinforced concrete
- + Demolition of rock and natural stone
- + Block quarrying in the natural stone industry
- + Tunneling

Darda GmbH

Im Tal 1 · 78176 Blumberg · Germany
T +49 (0)7702 4391-0 · info@darda.de
www.darda.de/en



MORE INFORMATION



TAKRAF Overland Conveyor

Driving Efficiency and Reliability.

TAKRAF Group designs overland conveyor systems for high availability, energy efficiency and reliable operation in demanding environments.

Using advanced dynamic analysis, optimized structures and gearless drive technology, our conveyors ensure continuous and sustainable transport across long distances and challenging terrain.



TAKRAF Gearless Overland Conveyor, 5.3 km, 11,000 tph, Chile



www.takraf.com
info@takraf.com



TAKRAF
For Mining with Meaning.